

This Situation Report is jointly issued by PNG National Department of Health and World Health Organization once weekly. This Report is not comprehensive and covers information received as of reporting date.

Situation Summary and Highlights

- ❑ As of 15 November (12:00 pm), there have been 602 COVID-19 cases and seven COVID-19 deaths reported in Papua New Guinea. From the period of 09 to 15 November, there have been 3 new cases: 1 from the National Capital District, 1 from West New Britain, and 1 from Western Province. The total number of provinces that have reported COVID-19 cases to date is fifteen.
- ❑ Technical support was provided to East Sepik Provincial Health Authority through the inter-cluster provincial visit by the National Control Centre (NCC) team comprised of representatives from surveillance, laboratory, clinical management, risk communication and community engagement clusters.
- ❑ On 11 and 12 November, more than 50 health care workers participated in the Case Investigation Form (CIF) Completion and Swabber Training with technical support from WHO.
- ❑ With the collaboration of the NDOH Health Facilities Standards Branch and Biosafety, Australia and through financial investment from the Department of Foreign Affairs and Trade (DFAT) Australia, five biomedical officers were able to participate in remote learning sessions on 11 November which commenced their training in becoming qualified to perform certification on biosafety cabinets. This training is the first of its kind in Papua New Guinea.
- ❑ A community engagement activity was held in Enga to understand people's understanding about COVID-19 and to raise level of community's awareness on COVID-19.
- ❑ Provincial logistics assessments were carried out in Western Highlands and Jiwaka.

Table 1. COVID-19 IN PAPUA NEW GUINEA¹

	New Cases (09-15 November 2020)	Cumulative Total
National Capital District	1	347
Western	1	204
Eastern Highlands	0	13
West New Britain	1	11
Central	0	7
Morobe	0	5
East Sepik	0	3
New Ireland	0	2
Enga	0	2
East New Britain	0	2
Milne Bay	0	2
AROB	0	1
Hela	0	1
Sandaun	0	1
Southern Highlands	0	1
TOTAL	3	602

¹ As of 2020/11/15, 12:00 pm, PNG time

Table 2. COVID-19 GLOBAL AND REGIONAL UPDATE²

	Confirmed Cases	Deaths
Global	53 766 728	1 308 975
Western Pacific	798 170	16 377

² WHO COVID-19 Dashboard as of 2020/11/15, 4:35 pm CEST

Upcoming Events and Priorities

- ❑ **Coordination:** Inter-cluster provincial visits by NCC teams (comprised of representatives from surveillance, laboratory, clinical management, risk communication and community engagement) are scheduled this week for Morobe and West New Britain. Visits are also arranged for AROB, Milne Bay and Southern Highlands in the coming weeks.
- ❑ **Surveillance and Quarantine:** Planning and coordination for the healthcare worker (HCW) survey is ongoing, with the data collection across provinces by telephone expected to commence this week. An after-action review of the 2019 Rapid Response Team (RRT) Training is planned to support the design of the 2021 RRT Training. Update meeting is scheduled between the NCC Quarantine Team and the software developer of the electronic Health Declaration Form (eHDF) to improve the system based on feedback received from passengers and point-of-entry/quarantine staff. Promotion of the eHDF is planned through airlines and other stakeholders to ensure all incoming passengers are aware and able to complete the eHDF. The form is available at <https://www.pnghdf.info/>.
- ❑ **Laboratory:** A two-day planning workshop for strengthening COVID-19 diagnostic response throughout PNG is scheduled on 19 to 20 November. The use of Google Sheets at the Central Public Health Laboratory will commence this week to better track samples from the provinces.

- ❑ **Case Management and Infection Prevention and Control:** Preparations are still ongoing for the critical care and ventilator training scheduled in November with support from NDoH, WHO and UNICEF. Work is continuing for the updating of the clinical management guidelines, IPC guidelines, and oxygen plant proposal. Support shall be provided on the development of a screening algorithm and a surge plan.
- ❑ **Risk Communication & Non-Pharmaceutical Interventions (NPIs):** Data analysis of the responses to the Rapid Convenience Survey and filming of the content for the re-branded Healthier Together campaign will continue. Media placements for the re-branded Healthier Together campaign materials will be coordinated.
- ❑ **Logistics and Supplies:** The orders placed for sample collection kits and GenExpert cartridges on the WHO Global Supply Portal will be closely coordinated. Provincial logistics assessments are scheduled for Simbu and Eastern Highlands.

National Transmission Assessment

3 – Large-scale community transmission

Due to low testing, there have been only a few reported cases in the past 7 days. Between 09 and 15 November, three newly confirmed cases have been reported nationally from three provinces (one case each from National Capital District, West New Britain, and Western Province). Fifteen out of 22 provinces have reported one or more cases since March 2020. Nationally, PNG remains in Stage 3 – large scale community transmission. However, conducting more detailed sub-national assessments is complicated by low rates of testing in many provinces, leading to low confidence about the absence of transmission in provinces that have not reported cases in the past 28 days. With ongoing population movement, increasing mass gatherings, and low compliance to non-pharmaceutical interventions in NCD, increasing cases are expected. With movement from NCD out to the provinces, sporadic cases and local clusters reported by other provinces are expected. Testing in all provinces remains critically low, therefore ongoing transmission in other parts of the country is a possibility as population mobility continues. Importation from bordering Papua Province in Indonesia and incoming travellers from other countries reporting COVID-19 cases also remains a threat. Testing needs to increase substantially to understand the extent of transmission.

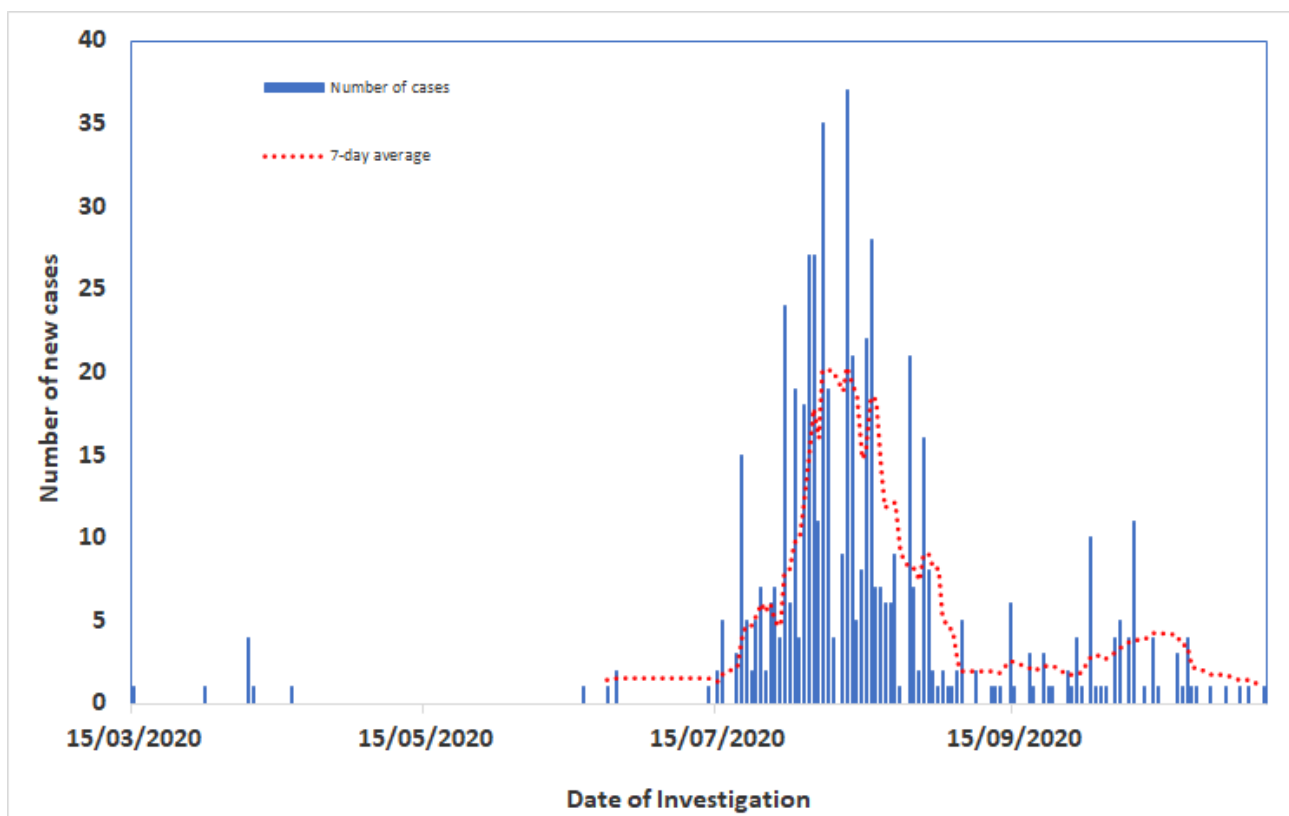
Epi Update COVID-19	Tests	Cases	Deaths	ICU Admissions
	651 NAT Tests past 7 days	3 New cases past 7 days	0 Deaths past 7 days	0 ICU Admissions past 7 days
	30678 Cumulative NAT Tests	602 Cumulative Cases	7 Cumulative Deaths	9 Cumulative ICU Admissions
	1 Imported Cases in past 28 days	2 Cases in past 7 days with no link	1 Active Clusters in the past 7 days	* Active clusters with >3 generations
Health Service Provision COVID-19	5116 Health care workers trained in COVID19 Case Management	0 Healthcare worker cases reported past week	1 Hospitals admitting COVID-19 patients	93 ICU beds for COVID-19 patients
				339 Non-ICU Hospital beds for COVID19 patients

* Case investigations are ongoing

Epidemiology

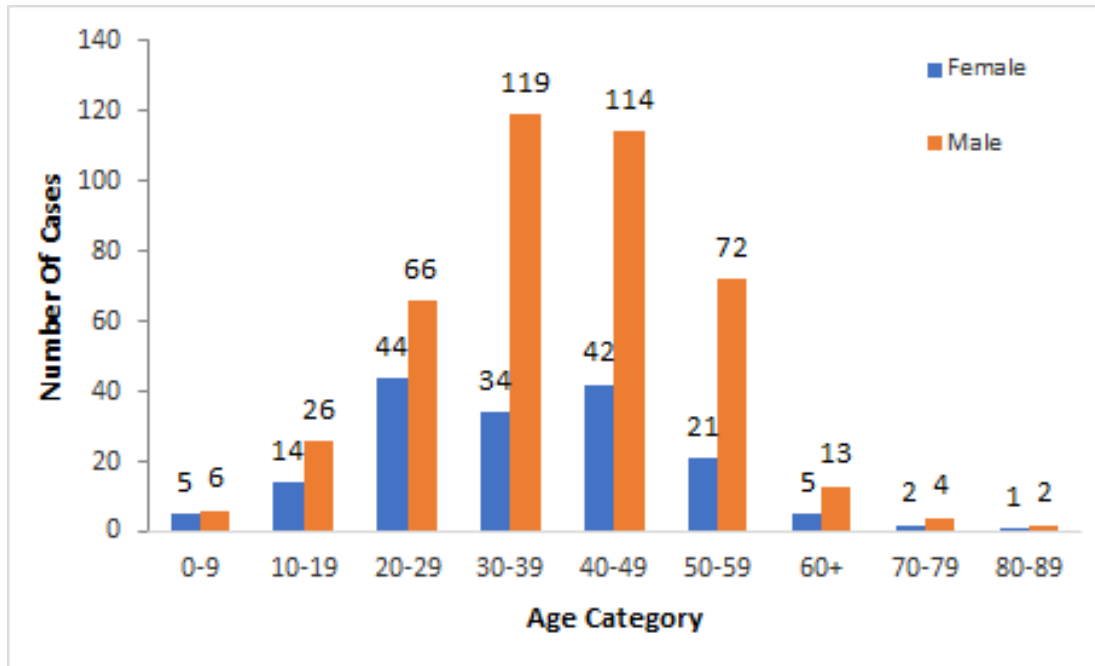
- As of 15 November (12:00 pm), there have been 602 COVID-19 cases and seven COVID-19 deaths reported in Papua New Guinea. From the period of 09 to 15 November, there have been 3 new cases: 1 from the National Capital District, 1 from West New Britain, and 1 from Western Province. Contact tracing is ongoing for the two unlinked cases.
- There are now confirmed COVID-19 cases reported from 15 out of 22 provinces (68.2%): Autonomous Region of Bougainville (1), Central (7), Eastern Highlands (13), East New Britain (2), East Sepik (3), Enga (2), Hela (1), Milne Bay (2), Morobe (5), NCD (347), New Ireland (2), Sandaun (1), Southern Highlands (1), West New Britain (11) and Western (204).

Figure 1. Epidemiological Curve of COVID-19 Cases in Papua New Guinea, 15 March to 15 November 2020



- Majority of the confirmed cases are male. Ages range from 1 to 84, with majority of cases aged between 20 and 60 years.
- Nationally, the majority of confirmed cases are male. This could be due to employment status, movement and male-dominated industries affected, health seeking behavior and access to testing.

Figure 2. COVID-19 Cases by Age-Group and Sex in Papua New Guinea, 15 March to 15 November 2020



- Most (57%) confirmed cases report being asymptomatic during presentation for swabbing (Figure 3). Contributing factors to the larger percentage of asymptomatic cases could be due to resilience and health seeking behaviours in Papua New Guinea, lack of reporting of past symptoms, lack of probing question about symptoms during swab collection, testing early during pre-symptomatic stage and mass testing. Of the symptomatic cases, the most common symptoms were cough or fever (Figure 4).

Figure 3. Proportion of Symptomatic and Asymptomatic COVID-19 Cases in Papua New Guinea at Time of Swabbing, March to 15 November 2020

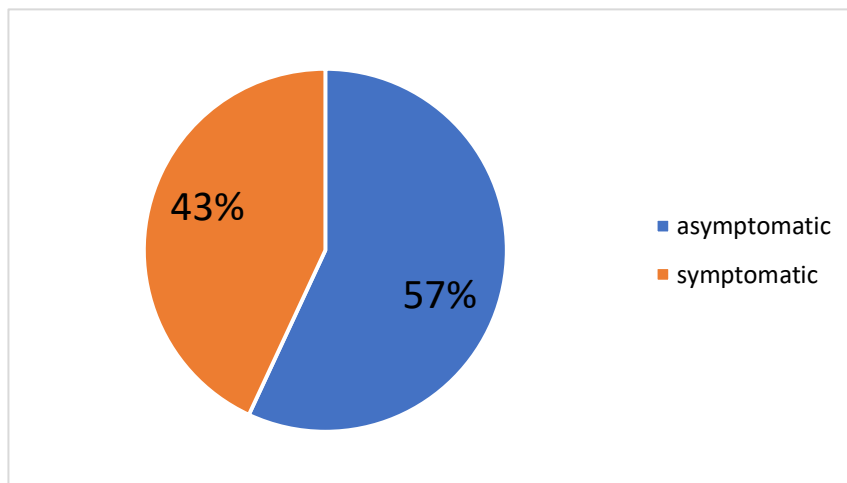
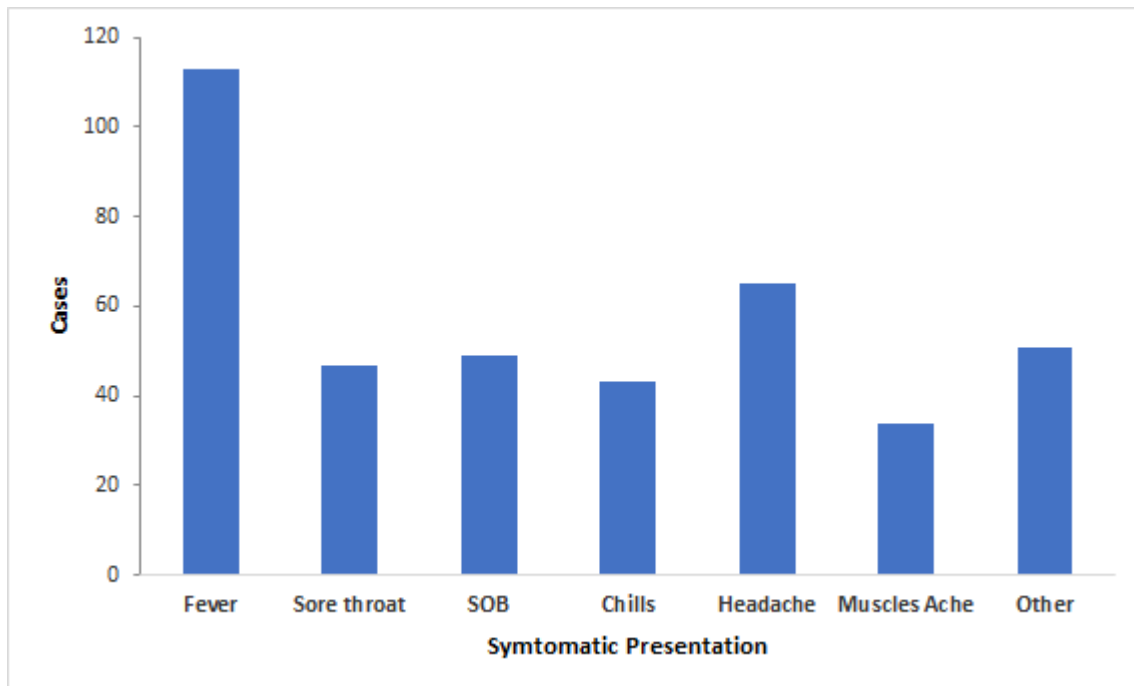


Figure 4. Symptoms on Presentation of COVID -19 Symptomatic Cases in Papua New Guinea, 15 March to 15 November 2020



- As sample collection and testing are low, there is a need to increase testing across all provinces. Work is being undertaken with the provinces, including training of extra swabbers and a survey of barriers and facilitators to swabbing amongst healthcare workers, to address this aim.
- For the period of 09 to 15 November, the COVID-19 National Hotline received 1767 calls. From which, 29 (1.6%) were health-related calls. Seventeen of these were referred to Rapid Response Team/PHA. As of 15 November, the Hotline received a total of 135 285 calls. Of these, 4633 (3.4%) were health-related calls. A total of 1487 calls were referred to Rapid Response Team/PHA.
- Papua Province in Indonesia is continuously reporting COVID-19 cases in areas that border Sandaun and Western Provinces. While the border is officially closed, the threat of case importation remains high. As of 14 November, Papua Province has reported a total of 10 863 confirmed cases and 172 deaths (data accessible at <https://covid19.papua.go.id/>).

Table 3. Persons Screened by Point of Entry

Total Number of Travelers Screened before SOE (until 22 March)	29 387	
Total Number of Travelers Screened during SOE (23 March – 16 June)	3788	
Total Number of Travelers Screened after SOE (17 June – 15 November)	Air	8640
	Sea*	671
	Land	6
	Total	9317

* 3 passengers and the rest are crew

Strategic Approach

National and Provincial Public Health Response

- The Pandemic Response Coordination Group continues to meet daily, while the Health Operations Team meets thrice weekly (M-W-F). The NCC Operational Blueprint is on its third implementation cycle which covers the period between 5 October and 15 November 2020. An implementation review meeting attended by NCC cluster leads was held on 12 November.

COVID-19 Prevention and Control

- The NCC and WHO are supporting Provincial Health Authorities through inter-cluster provincial visits with the following aims: (1) undertake oxygen needs assessment of provincial health facilities; (2) provide technical support to health facilities to ensure screening, triage and isolation set up is adequate particularly in areas where there is likely to be a surge in cases; (3) provide technical support in developing tailored community engagement and risk communication strategies for testing, prevention practices and Niupela Pasin measures; (4) improve surveillance and contact tracing capacity; and, (5) assist with undertaking epidemiological investigations in provinces with no clear epidemiological links.
- With collaboration of NDOH Health Facilities Standards Branch and Biosafety, Australia and through the financial support from DFAT Australia, five biomedical officers participated in remote learning sessions as part of their training in becoming qualified to perform certification on biosafety cabinets (BSCs). Once these officers have successfully completed the online training modules and an observed practical session, they will be qualified to undertake certification of BSCs in the country.
- The Case Investigation Form (CIF) Completion and Swabber Training was conducted on 11 and 12 November with technical support from WHO. More than 50 health care workers participated in the training. A list of health facilities conducting swabbing for COVID-19 has been compiled (Annex B).
- Using the updated training modules prepared with technical support from WHO, the district-level trainings are continued under the NDOH PNG COVID-19 Emergency Response Project financed by World Bank and with technical support by UNICEF and WHO. Trainings are yet to be completed in Eastern Highlands, Hela, Milne Bay, Morobe and Western.

Table 4. Number of Healthcare Workers and Programme Managers Trained under NDOH PNG COVID-19 Emergency Response Project Financed by World Bank and with technical support by UNICEF and WHO as of 15 November 2020

	Province	Number of Batches Completed	Number of Individuals Trained		Province	Number of Batches Completed	Number of Individuals Trained
1	Western Highland	3	72	8	Eastern Highland	1	32
2	Jiwaka	3	65	9	Southern Highland	3	43
3	Simbu	3	64	10	Gulf	2	21
4	Central	3	54	11	Milne Bay	2	38
5	Hela	1	18	12	Oro	2	44
6	Morobe	8	124	13	Western	2	80
7	Madang	2	85				
TOTAL NUMBER OF BATCHES			35	TOTAL NUMBER OF TRAINED INDIVIDUALS			740

Table 5. Number* of Health Care Workers Trained by Province

Province			Total	Province			Total
No.	MOMASE REGION			No.	NEW GUINEA ISLANDS REGION		
1	Madang		431	12	ARoB		37
2	Morobe		549	13	East New Britain		236
3	East Sepik		92	14	Manus		89
4	West Sepik		200	15	New Ireland		320
No.	HIGHLANDS REGION			16	West New Britain		328
5	Eastern Highlands		146	No.	SOUTHERN REGION		
6	Enga		112	17	Central		330
7	Hela		99	18	Gulf		51
8	Jiwaka		138	19	Milne Bay		132
9	Simbu		64	20	NCD		269
10	Southern Highlands		410	21	Oro		78
11	Western Highlands		851	22	Western		154

*Trained under WHO trainings and NDOH PNG COVID-19 Emergency Response Project

Table 6. Number of Facilities and Beds for COVID-19 as of 15 November 2020

Health Facilities	Number of Provinces	Number of Facilities OR Beds	Provinces that Reported
Pre-triage facilities	20	>120	ARoB, Central, EH, ENB, ES, Enga, Gulf, Hela, Jiwaka, Madang, Morobe, MB, NCD, NI, Oro, SH, Simbu, WS, Western, WH, WNB
Quarantine facilities	13	223	ARoB, EH, ENB, Enga, Hela, Jiwaka, Madang, Manus, Morobe, NCD, SH, Simbu, WH
Isolation facilities	17	339	ARoB, EH, ENB, Enga, Hela, Jiwaka, Madang, Manus, Morobe, MB, NCD, SH, Simbu, WS, Western, WH, WNB
Intensive Care Unit	16	93	AROB, EH, ENB, Enga, Gulf, Hela, Madang, Manus, Morobe, MB, NCD, SH, Simbu, WS, Western, WNB
Autonomous Region of Bougainville (ARoB), East Sepik (ES), East New Britain (ENB), Eastern Highlands (EH), Milne Bay (MB), National Capital District (NCD), New Ireland (NI), Southern Highlands (SH), West New Britain (WNB), Western Highlands (WH), West Sepik (WS)			

Communication, Community Engagement and Non-Pharmaceutical Interventions (Social Measures) – NIUELA PASIN

- Data entry from 1332 respondents from 63 districts across the 22 provinces has been completed. Data analysis is ongoing.
- A community engagement activity was held in Enga to understand people's understanding about COVID-19 and as opportunity to raise level of the community's awareness.
- The first media campaign supported by World Bank and UNICEF has been extended to 24 November for a month from 24 October. From the beginning of the campaign, it placed: (1) 298 television commercial spots in EMTV, TVWan and TVWan Plus, including the bonus TVC spots given by the host television channels; (2) 932 radio spots in FM100, Hot FM, Yumi FM and Wantok Radio Light; and, (3) 82 COVID-19 advertisements that have been featured on daily newspapers (Post Courier and the National Newspaper) and in only Tok Pisin weekly newspaper (Wantok Niuspepa). Billboards with COVID-19 messages are also being put up.

Table 7. Monitoring of NPIs Implemented in Papua New Guinea

Social Measures	Monitoring Status					
	Date first implemented	Date last modified	Implementation		Partial lift Lifted for some area	Lifted Lifted for all areas
			Geographical (national or sub-national)	Recommended or Required		
Hand Hygiene and Respiratory Etiquette	16 January*	3 October	National	Required		
Wearing Face Masks	29 July	3 October	Sub-national**	Required		
School Closure	23 March	17 August	Sub-national	Required		√
Workplace Closure	23 March	3 October	National***	Required		
Mass Gatherings	23 March	3 October	National	Required		
Stay at Home	23 March	3 October	Sub-national****	Required		√
Restrictions on Internal Movement (within country)	23 March	3 October	National	Required		√
Restrictions on International Travel	14 February	3 October	National	Required	√	

* First social media post done; ** In National Capital District; in public transportation (including Central Province) and aircraft

Only selected type of establishments; * Curfew in NCD between 12 to 5 am

Logistics and Supplies

- WHO encourages partners to utilize the COVID-19 Supply Portal accessible at <https://covid-19-response.org/>. The Portal is a purpose-built tool that assigns orders to purchasing agencies that can execute and process them.
- Apart from the ongoing provincial logistics assessments in several provinces, there are ongoing discussions with the National Department of Health on the integration/transition of the COVID-19 supplies into routine supply chain, options for longer term storage and alignment with the Medical Supplies Reform Master Plan.

Funding and Expenditure

- Below is a summary of COVID-19 funding and expenditure as of 13 November. The tables below pertain only to funds that were held and transacted through the NDOH Health Services Improvement Program (HSIP) Trust Account, thus not comprehensive to cover all COVID-19 support made available through other modalities (e.g. funding through UN Agencies, etc.). Under the HSIP Trust Account, the total available funds from all sources is PGK 35 526 805.

Table 8. COVID-19 Funding and Expenditure Summary by Fund Source as of 13 November 2020

No.	Funding Source	Initial Amount	YTD Expend	O/S Commitments	Balance Available
1	GoPNG NDoH 2019 HIV/AIDS Reprogrammed Funds	3 299 651	3 186 642	113 009	-
2	GoPNG COVID-19 Funds 2020 from Treasury 2020	43 300 000	36 615 307	6 684 693	-
3	GoPNG COVID-19 Funds 2020 from Treasury (NOC)	2 000 000	1 999 793	-	207
4	GoPNG New COVID-19 Funds 2020 for PHAs	37 000 000	2 000 000	29 100 000	5 900 000
5	GoPNG New COVID-19 Funds for NDOH Clusters	28 000 000	2 683 000	-	25 317 000
6	GoPNG COVID-19 Funds 2020 from Treasury (NCC)	2 000 000	664 604	-	1 335 396
7	DFAT Emergency COVID-19 Funding	24 800 967	19 250 000	3 348 122	2 202 845
8	UNICEF Contribution to COVID-19	368 480	367 971	-	509
9	WHO COVID-19 Surveillance Funds (for 22 Provinces)	634 240	634 240	-	-
10	Private Sponsors	1 181 001	1 108 500	-	72 501
11	New Zealand Government	6 298 800	6 001 901	-	296 899
12	UNFPA Support to COVID-19 Emergency Response	549 580	148 133	-	401 447
13	Incentive Funds for Risk Communication Support in WNB	156 171	156 171	-	-
Total Funds in HSIP		149 588 889	74 816 261	39 245 824	35 526 805

ANNEX A – Quality Requirements for COVID-19 Medical Products

(Source: NDOH Circular No. 38/2020 Attachment)

Quality Requirements for COVID 19 Medical Products

Registered pharmaceutical importers, wholesalers and exporters are required to submit the following quality documentation in advance of importation. These technical documents must be current and in coloured copies of the original documents. The technical documents also be must be stamped and signed appropriately and must be legible and written in English.

Medicines:

1. Letter of authorisation from the manufacturer in the country of origin where the product will be sourced.
2. Certificate of Good Manufacturing Practice of the manufacturer.
3. Certificate of Pharmaceutical Product or evidence of registration by the mutual drug regulatory authority from the country of origin.
4. Certificate of Analysis of the Batch of the Product to be imported
5. Specimens of Product Labels or a clear coloured photograph of the Product to be imported.
6. The total quantity of the Product to be imported.

Medical Devices:

1. Letter of authorisation from the manufacturer of the medical device in the country of origin.
2. Quality Management System Certification: ISO: 13485: 2016 from the manufacturer of the Medical Device in the country of origin and Product Schedule.
3. Specimens of Product Labels or Product Brochure/Catalogue including Medical Device Specifications.
4. The total quantity of the medical device to be imported.

ANNEX B – List of Health Facilities Conducting Swabbing for COVID-19

This list is undergoing further verification.

New Guinea Islands Region

AROB		East New Britain Province	
North	Buka Hospital	Gazelle	Kerevat District Hospital
Central	Arawa District Hospital	Kokopo	St Mary's Hospital
South	Buin Health Centre	Pomio	Butuwin Urban Clinic
		Rabaul	Warangoi Health Centre
			Rabaul Urban Clinic
Manus Province		New Ireland Province	
Manus	Lorengau Provincial Hospital	Kavieng	Kavieng Provincial Hospital
			Lemakot Health Centre
		Namatanai	Kimadan Health Centre
			Namatanai Health Centre
			Simberi Health Sub Centre
			Konos Aid Post
Western New Britain			
Talasea	Kimbe Provincial Hospital		

Southern Region

Central Province		Gulf	
Abau	Moreguina Health Centre	Kerema	Kerema Provincial Hospital
Kairiku- Hiri	PAU		
NCD		Western	
NCD	Port Moresby General Hospital	North Fly	Kiunga Health Centre
	Lawes Road		Tabubil Hospital
		South Fly	Daru Provincial Hospital

Momase Region

East Sepik Province		Madang	
Ambunti-Drekikir	Ambunti Health Centre	Madang	Yagaum District Hospital
	Drekikir health Centre		Madang PHA
Maprik	Maprik District Hospital	West Sepik	
	Wewak Town Clinic	Vanimo Green	Vanimo Provincial Hospital
Wewak	Old Weather Station Triage		
Yangoru- Saussia	Yangorru Health Centre		
	Kubalia Health Centre		
Morobe			
Bulolo	Bulolo District Hospital	Lae	ANGAU Base Hospital
	Mumeng Health Centre		Malahang Health Centre
	Wau Health Centre		Buimo Urban Clinic
	Buang Health Sub Centre		Milfordhaven Urban Clinic
Finschafen	Braun District Hospital		Flores International Hospital
Kabwum	Kabwum Health Centre	Huon Gulf	Morobe Health Centre
Markham	Mutsing Health Centre		Salamua Health Centre
	Wampar Health Centre	Menyamya	Menyamya Health Centre
Tewai- Siassi	Wasu Aid Post	Nawae	Boana Health Centre
			Bumayong Health Sub Centre

Highlands Region

Eastern Highlands Province		Enga Province	
Daulo	Asaro Health Centre	Kompam- Ambum	Kompam District Hospital
Goroka	Eastern Highlands Provincial Hospital	Lagaip-Porgera	Laiagam District Hospital
Kainantu	Kainantu District Hospital	Wabag	Wabag Provincial Hospital Sopas Urban Health Centre
Okapa	Okapa District Hospital	Wapenamanda	Mambisanda Health Centre
Jiwaka Province		Simbu Province	
Angalimp – South Wahgi	Kindeng Health Centre	Chuave	Chuave Health Centre
North Wahgi	Nondugl Health Centre Fatima Urban Health Centre	Karimui- Nomane	Kilau Health Centre
South Wahgi	Kudjip Nazarene District Hospital	Kundiawa-Gembogi	Kundiawa Provincial Hospital
		Sinasina- Yonggamugl	Koge Health Centre
Southern Highlands Province		Western Highlands Province	
Ialibu-Pangia	Ialibu District Hospital	Hagen	Mt Hagen Provincial Hospital
Mendi-Munihu	Mendi Provincial Hospital	Mul- Baiyer	Bukapena Health Centre
Nipa-Kutubu	Nipa Health Centre	Tambul- Nebilyer	Togoba Health Centre

ANNEX C – Photos



Photo 1. Health Operations meetings are held every Mondays, Wednesdays and Fridays.



Photos 2-5. Two-day Case Investigation Form Completion and Swabbing Training was held on 11 and 12 November.

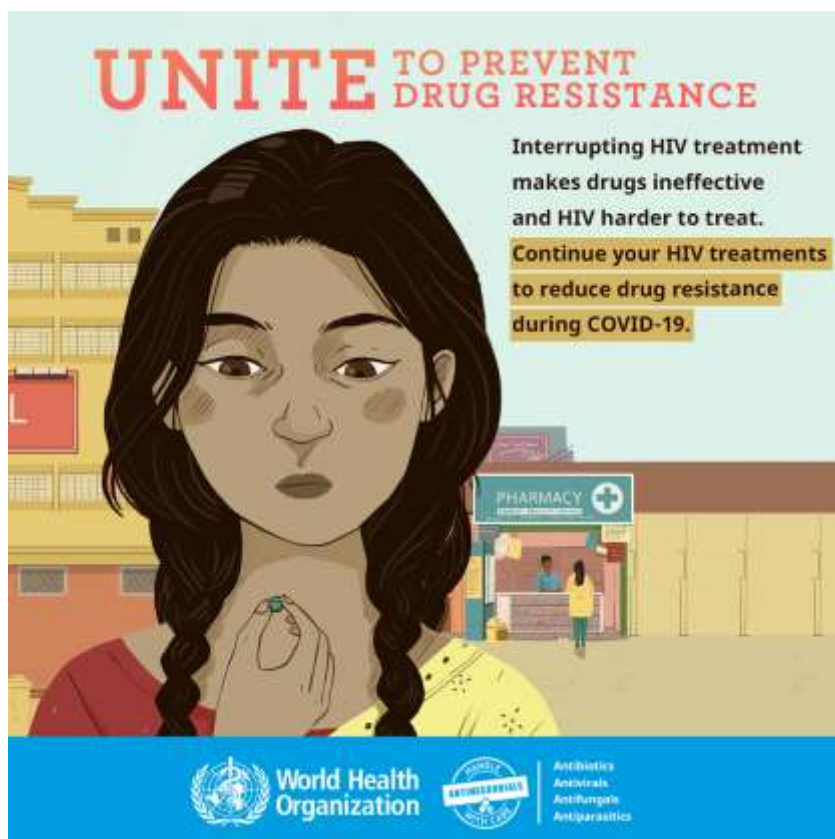
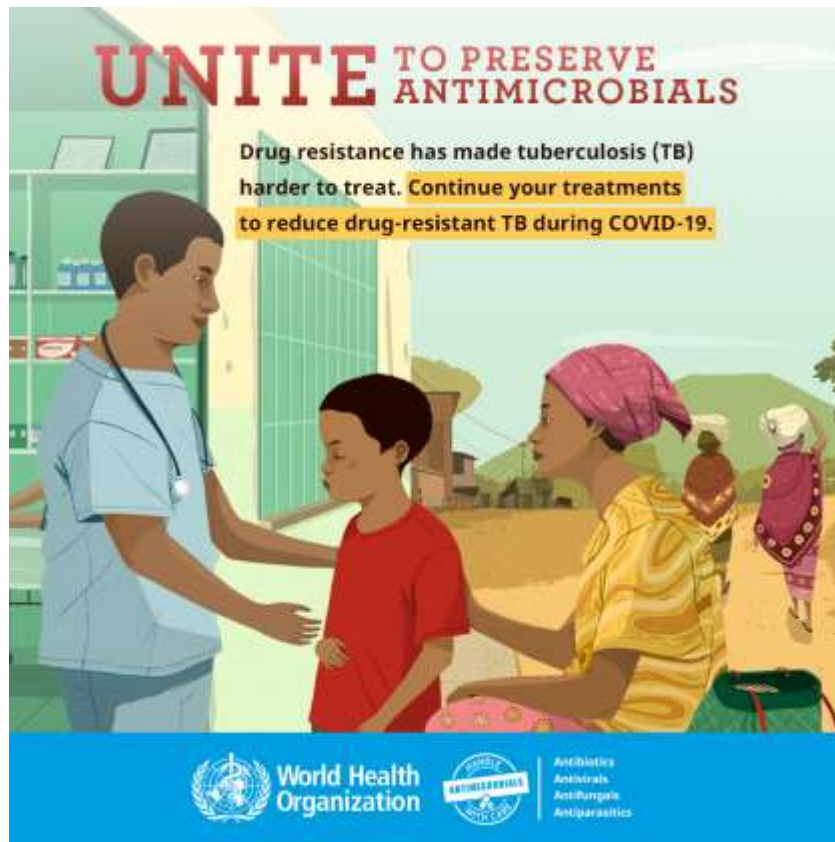


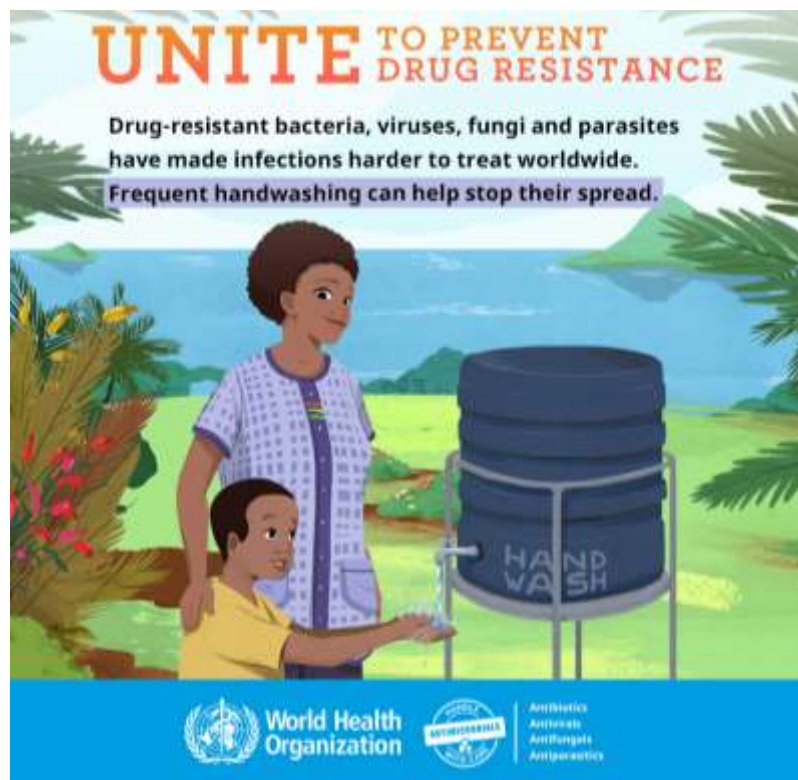
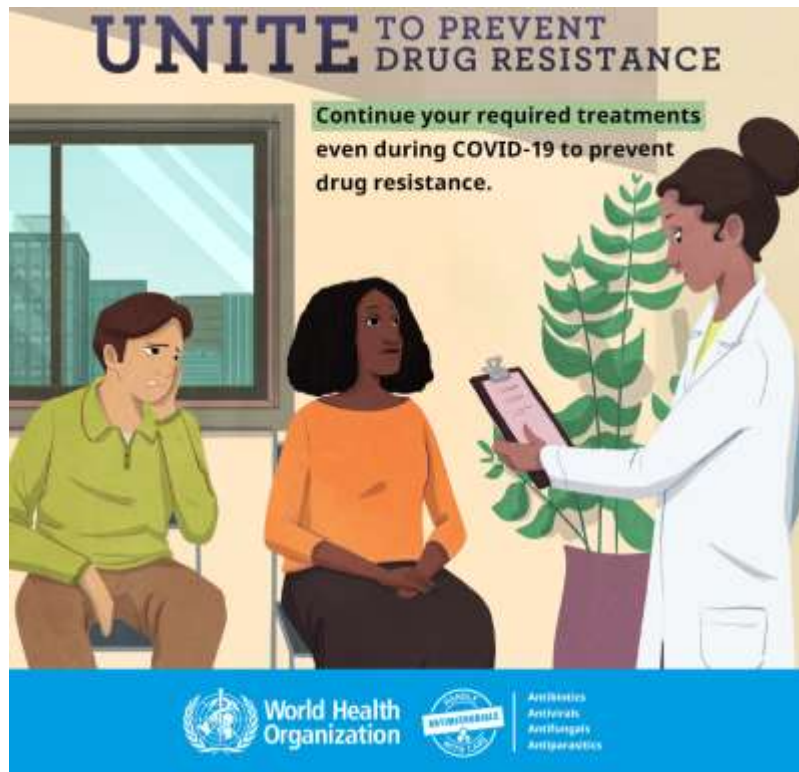
Photos 6-7. Conduct of Biosafety Cabinet Training for the biomedical officers at the NDOH Health Facilities Standards Branch



Photos 8-9. Community engagement activity for COVID-19 in Enga Province

ANNEX D – Risk Communication Products





For more information about this Situation Report, contact:

Dr Daoni Esorom

A/Executive Manager, Public Health, National Department of Health
Email: daoniesorom@gmail.com; Mobile: +675-72313983

Mr Eric Salenga

Information and Planning Team, World Health Organization
Email: salengar@who.int