

This Situation Report is jointly issued by PNG National Department of Health and World Health Organization once weekly. This Report is not comprehensive and covers information received as of reporting date.

Situation Summary and Highlights

- ❑ As of 08 November (12:00 pm), there have been 599 COVID-19 cases and seven COVID-19 deaths reported in Papua New Guinea. From the period of 02 to 08 November, there have been 8 new cases: 4 from West New Britain, 2 from the National Capital District, 1 from New Ireland, and the first case from Hela. The total number of provinces that have reported COVID-19 cases to date is fifteen.
- ❑ A laboratory-focused meeting attended by representatives from Central Public Health Laboratory (CPHL), PNG Institute for Medical Research (IMR), Australian Department of Foreign Affairs and Trade (DFAT) and WHO was held to discuss enhanced coordination and the development of the laboratory network in the country.
- ❑ Technical support was provided to East New Britain and New Ireland Provincial Health Authorities through the inter-cluster provincial visits by the National Control Centre (NCC) teams comprised of representatives from surveillance, laboratory, clinical management, risk communication and community engagement clusters.
- ❑ Provincial logistics assessments were done in Southern Highlands, Enga and Western Highlands.

Upcoming Events and Priorities

- ❑ **Coordination:** The NCC will finalise the programme for the upcoming COVID-19 Summit which is scheduled to take place on 30 November to 11 December. Apart from sessions dedicated to reporting by the NCC Clusters for the national response and by the provincial authorities for provincial response, specific segments of the summit are dedicated to various sectors, such as: health and science; social, legal and security; and, economic, business and finance. Inter-cluster provincial visits by NCC teams (comprised of representatives from surveillance, laboratory, clinical management, risk communication and community engagement) are scheduled for East Sepik, Morobe, West New Britain, AROB, Milne Bay and Southern Highlands.
- ❑ **Surveillance and Quarantine:** The Case Investigation Form (CIF) Completion and Swabber Training is scheduled on 11 and 12 November with technical support from WHO. Presentations shall be made at the NCC Health Operations regarding the updated testing strategy and progress on the Healthcare Worker Survey. Update meeting is scheduled between the NCC Quarantine Team and the software developer of the electronic Health Declaration Form.
- ❑ **Laboratory:** The NDOH Health Facilities Standards Branch will conduct a training this week for the use of biosafety cabinets. Preparations are also ongoing for a two-day planning workshop for strengthening COVID-19 diagnostic response throughout PNG scheduled for 17 and 18 November.
- ❑ **Case Management and Infection Prevention and Control:** Preparations are still ongoing for the critical care and ventilator training scheduled in November with support from NDoH, WHO and UNICEF. Findings of the oxygen needs assessment shall be presented at the NCC Health Operations meeting. The review and updates done on the National Clinical Guidelines shall be sent to the NCC Clinical Management Cluster for endorsement. Feedback on the Health

Table 1. COVID-19 IN PAPUA NEW GUINEA¹

	New Cases (02-08 November 2020)	Cumulative Total
National Capital District	2	346
Western	0	203
Eastern Highlands	0	13
West New Britain	4	10
Central	0	7
Morobe	0	5
East Sepik	0	3
New Ireland	1	2
Enga	0	2
East New Britain	0	2
Milne Bay	0	2
AROB	0	1
Hela	1	1
Sandaun	0	1
Southern Highlands	0	1
TOTAL	8	599

¹ As of 2020/11/08, 12:00 pm, PNG time

Table 2. COVID-19 GLOBAL AND REGIONAL UPDATE²

	Confirmed Cases	Deaths
Global	49 578 590	1 245 717
Western Pacific	765 197	15 942

² WHO COVID-19 Dashboard as of 2020/11/08, 4:07 pm CEST

Facility Readiness Checklist shall be coordinated, and the revised tool to be submitted for endorsement. The distribution of the National IPC Guidelines to provinces will be continued for completion.

- ❑ **Risk Communication & Non-Pharmaceutical Interventions (NPIs):** Data entry of the responses to the Rapid Convenience Survey and filming of the content for the Better Together campaign will continue. Media placements for the Better Together campaign materials will be coordinated.
- ❑ **Logistics and Supplies:** The orders placed for sample collection kits and GenExpert cartridges on the WHO Global Supply Portal will be closely coordinated. Feedback from the NCC Logistics Cell and partners on the SOP and template for logistics dashboard will be followed up to facilitate eventual rollout. Proposed warehousing / storage solutions to move COVID-19 commodities out of the PNGDF warehouse shall be communicated. Visit to the NDOH Medical Supplies Procurement and Distribution Branch will be done to discuss coordination and preparation for the integration of the COVID-19 commodities into the mSupply. Provincial logistics assessment is scheduled for Jiwaka, Simbu, Eastern Highlands, East New Britain, Milne Bay, West New Britain, New Ireland, Western and AROB.

National Transmission Assessment

3 – Large-scale community transmission

Due to low testing, there have been only a few reported cases in the past 7 days. Between 1 and 8 November, 8 newly confirmed cases have been reported nationally from three provinces. Fifteen out of 22 provinces have reported one or more cases since March 2020, with Hela Province reporting its first case. Of the new cases in the past 7 days, 4 (50%) were from West New Britain Province, 2 (25%) from National Capital District (NCD) and 1 each (12.5%) from Hela and New Ireland Province. Nationally, PNG remains in Stage 3 – large scale community transmission, with further sub-national and regional transmission assessments underway. With ongoing population movement, increasing mass gatherings, and low compliance to non-pharmaceutical interventions in NCD, increasing cases are expected. With movement from NCD out to the provinces, sporadic cases and local clusters reported by other provinces are expected. Testing in all provinces remains critically low, therefore ongoing transmission in other parts of the country is a possibility as population mobility continues. Importation from bordering Papua Province in Indonesia and incoming travellers from other countries reporting COVID-19 cases also remains a threat. Testing needs to increase substantially to understand the extent of transmission.

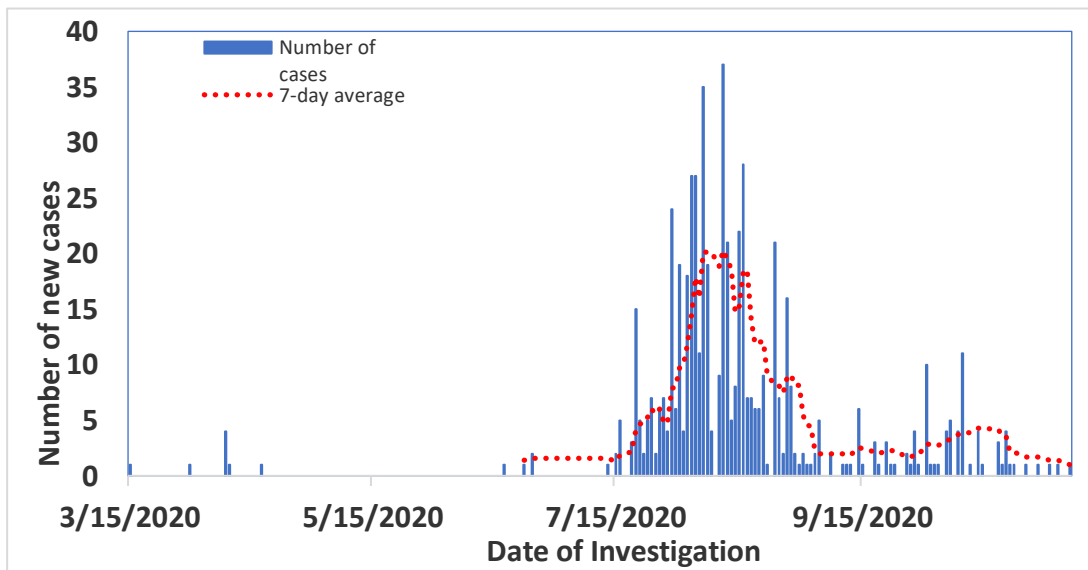
Epi Update COVID-19	Tests	Cases	Deaths	ICU Admissions
	561 NAT Tests past 7 days	8 New cases past 7 days	0 Deaths past 7 days	0 ICU Admissions past 7 days
	30027 Cumulative NAT Tests	599 Cumulative Cases	7 Cumulative Deaths	9 Cumulative ICU Admissions
	1 Imported Cases in past 28 days	7 Cases in past 7 days with no link	2 Active Clusters in the past 7 days	* Active clusters with >3 generations
Health Service Provision COVID-19	5116 Health care workers trained in COVID19 Case Management	0 Healthcare worker cases reported past week	1 Hospitals admitting COVID-19 patients	93 ICU beds for COVID-19 patients
				339 Non-ICU Hospital beds for COVID19 patients

* Case investigations are ongoing

Epidemiology

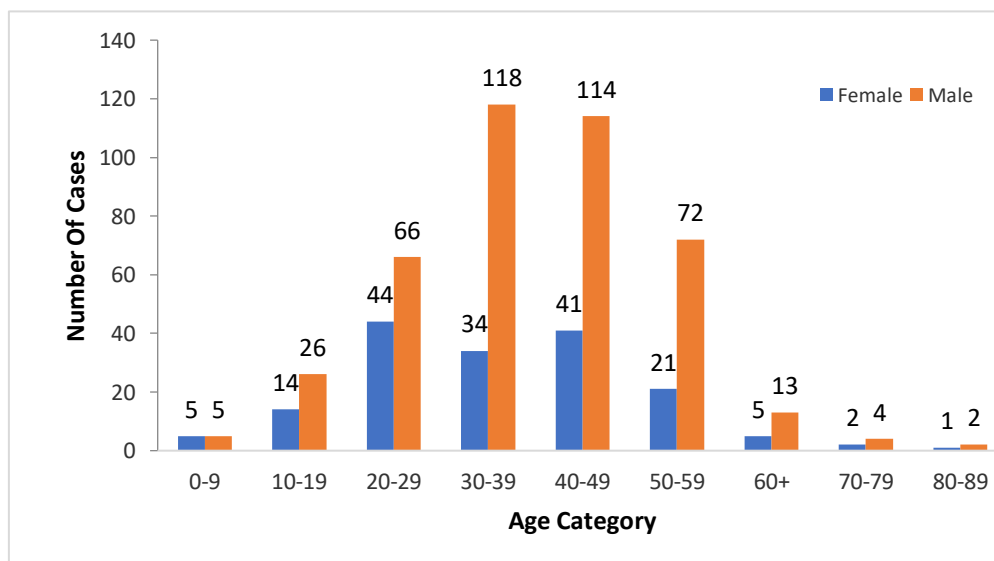
- As of 8 November (12:00 pm), there have been 599 COVID-19 cases and seven COVID-19 deaths reported in Papua New Guinea. From the period of 02 to 08 November, there have been 8 new cases: 4 from West New Britain, 2 from the National Capital District, 1 from New Ireland, and the first case from Hela. Contact tracing is ongoing for confirmed cases where required.
- There are now confirmed COVID-19 cases reported from 15 out of 22 provinces (68.2%): Autonomous Region of Bougainville (1), Central (7), Eastern Highlands (13), East New Britain (2), East Sepik (3), Enga (2), Hela (1), Milne Bay (2), Morobe (5), NCD (346), New Ireland (2), Sandaun (1), Southern Highlands (1), West New Britain (10) and Western (203).

Figure 1. Epidemiological Curve of COVID-19 Cases in Papua New Guinea, 15 March to 08 November 2020



- Majority of the confirmed cases are male. Ages range from 1 to 84, with majority of cases aged between 20 and 60 years.
- Nationally, majority of all confirmed cases are male. This could be due to employment status, movement and male-dominated industries affected, health seeking behavior and access to testing.

Figure 2. COVID-19 Cases by Age-Group and Sex in Papua New Guinea, 15 March to 08 November 2020



- Most (57%) confirmed cases report being asymptomatic during presentation for swabbing (Figure 3). Contributing factors to the larger percentage of asymptomatic cases could be due to resilience and health seeking behaviours in Papua New Guinea, lack of reporting of past symptoms, lack of probing question about symptoms during swab collection, testing early during pre-symptomatic stage and mass testing. Of the symptomatic cases, the most common symptoms were cough or fever (Figure 4).

Figure 3. Proportion of Symptomatic and Asymptomatic COVID-19 Cases in Papua New Guinea at Time of Swabbing, March to 08 November 2020

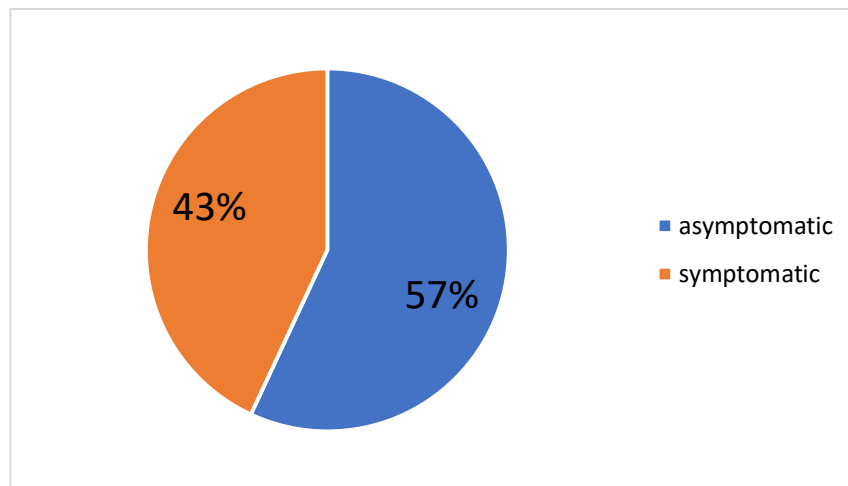
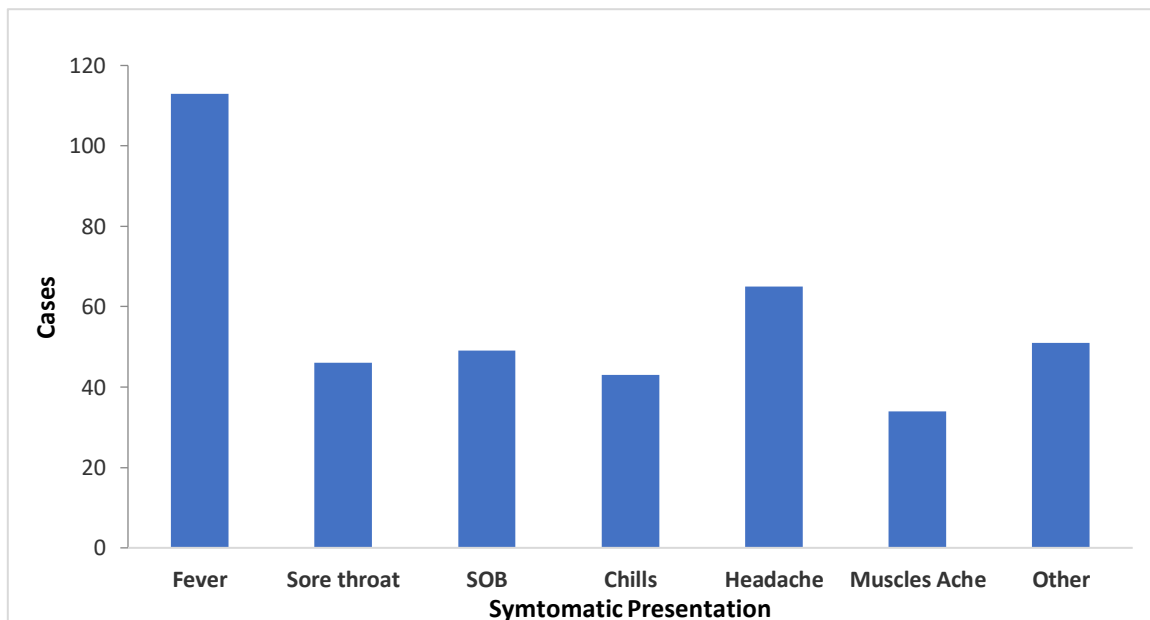


Figure 4. Symptoms on Presentation of COVID -19 Symptomatic Cases in Papua New Guinea, 15 March to 08 November 2020



- As sample collection and testing are low, there is a need to increase testing across all provinces. Work is being undertaken with the provinces, including training of extra swabbers and a survey of barriers and facilitators to swabbing amongst healthcare workers, to address this aim.
- For the period of 02 to 08 November, the COVID-19 National Hotline received 1795 calls. From which, 39 (2.2%) were health-related calls. Thirty-four of these were referred to Rapid Response Team/PHA. As of 08 November, the Hotline received 133 518 calls. Of these, 4604 (3.4%) were health-related calls. A total of 1471 calls were referred to Rapid Response Team/PHA.

- Papua Province in Indonesia is continuously reporting COVID-19 cases in areas that border Sandaun and Western Provinces. While the border is officially closed, the threat of case importation remains high. As of 06 November, Papua Province has reported a total of 10 180 confirmed cases and 159 deaths (data accessible at <https://covid19.papua.go.id/>).

Table 3. Persons Screened by Point of Entry

Total Number of Travelers Screened before SOE (until 22 March)	29 387	
Total Number of Travelers Screened during SOE (23 March – 16 June)	3788	
Total Number of Travelers Screened after SOE (17 June – 08 November) * 3 passengers and the rest are crew	Air	8062
	Sea*	671
	Land	6
	Total	8739

Strategic Approach

National and Provincial Public Health Response

- The Pandemic Response Coordination Group continues to meet daily, while the Health Operations Team meets thrice weekly (M-W-F). The NCC Operational Blueprint is on its third implementation cycle which covers the period between 5 October and 15 November 2020.
- The upcoming COVID-19 National Planning and Review Summit aims to produce a Transition Report that outlines a pathway for PNG beyond 2020 with regards to improvement in all operations relating to 'containment and mitigation' and a model for 'recovery' aimed at assisting all sectors in PNG to embrace 'Niupela Pasin' (New Way) moving forward, while providing equitable platform for socio-economic stability.

COVID-19 Prevention and Control

- The NCC and WHO are supporting Provincial Health Authorities through inter-cluster provincial visits with the following aims: (1) undertake oxygen needs assessment of provincial health facilities; (2) provide technical support to health facilities to ensure screening, triage and isolation set up is adequate particularly in areas where there is likely to be a surge in cases; (3) provide technical support in developing tailored community engagement and risk communication strategies for testing, prevention practices and Niupela Pasin measures; (4) improve surveillance and contact tracing capacity; and, (5) assist with undertaking epidemiological investigations in provinces with no clear epidemiological links.
- Using the updated training modules prepared by all clusters with technical support from WHO, the district-level trainings are continued under the NDOH PNG COVID-19 Emergency Response Project financed by World Bank and with technical support by UNICEF and WHO. Trainings are yet to be completed in Eastern Highlands, Hela, Milne Bay, Morobe and Western Provinces.

Table 4. Number of Healthcare Workers and Programme Managers Trained under NDOH PNG COVID-19 Emergency Response Project Financed by World Bank and with technical support by UNICEF and WHO as of 08 November 2020

	Province	Number of Batches Completed	Number of Individuals Trained		Province	Number of Batches Completed	Number of Individuals Trained
1	Western Highland	3	72	8	Eastern Highland	1	32
2	Jiwaka	3	65	9	Southern Highland	3	43
3	Simbu	3	64	10	Gulf	2	21
4	Central	3	54	11	Milne Bay	2	38
5	Hela	1	18	12	Oro	2	44
6	Morobe	8	124	13	Western	2	80
7	Madang	2	85				
TOTAL NUMBER OF BATCHES		35		TOTAL NUMBER OF TRAINED INDIVIDUALS		740	

Table 5. Number* of Health Care Workers Trained by Province

Province		Total	Province		Total
No.	MOMASE REGION		No.	NEW GUINEA ISLANDS REGION	
1	Madang	431	12	ARoB	37
2	Morobe	549	13	East New Britain	236
3	East Sepik	92	14	Manus	89
4	West Sepik	200	15	New Ireland	320
No.	HIGHLANDS REGION		16	West New Britain	328
5	Eastern Highlands	146	No.	SOUTHERN REGION	
6	Enga	112	17	Central	330
7	Hela	99	18	Gulf	51
8	Jiwaka	138	19	Milne Bay	132
9	Simbu	64	20	NCD	269
10	Southern Highlands	410	21	Oro	78
11	Western Highlands	851	22	Western	154

*Trained under WHO trainings and NDOH PNG COVID-19 Emergency Response Project

Table 6. Number of Facilities and Beds for COVID-19 as of 08 November 2020

Health Facilities	Number of Provinces	Number of Facilities OR Beds	Provinces that Reported
Pre-triage facilities	20	>120	ARoB, Central, EH, ENB, ES, Enga, Gulf, Hela, Jiwaka, Madang, Morobe, MB, NCD, NI, Oro, SH, Simbu, WS, Western, WH, WNB
Quarantine facilities	13	223	ARoB, EH, ENB, Enga, Hela, Jiwaka, Madang, Manus, Morobe, NCD, SH, Simbu, WH
Isolation facilities	17	339	ARoB, EH, ENB, Enga, Hela, Jiwaka, Madang, Manus, Morobe, MB, NCD, SH, Simbu, WS, Western, WH, WNB
Intensive Care Unit	16	93	ARoB, EH, ENB, Enga, Gulf, Hela, Madang, Manus, Morobe, MB, NCD, SH, Simbu, WS, Western, WNB

Autonomous Region of Bougainville (ARoB), East Sepik (ES), East New Britain (ENB), Eastern Highlands (EH), Milne Bay (MB), National Capital District (NCD), New Ireland (NI), Southern Highlands (SH), West New Britain (WNB), Western Highlands (WH), West Sepik (WS)

Communication, Community Engagement and Non-Pharmaceutical Interventions (Social Measures) – NIUELA PASIN

- More than 1300 respondents from 22 provinces across PNG participated in the month-long Rapid Convenience Survey. Data entry by NDOH staff is ongoing.
- The RCCE team participated in the inter-cluster joint mission in East New Britain to support the NDOH counterparts. The RCCE and Niupela Pasin activities in the province included: (1) community engagement in Vunamami-2 village, coordinated with Ward Member Kaminiel Luaina; (2) meeting with ENB Chair of the Chamber of Commerce (David Stein) on new normal measures; (3) filming of Anette Sete (traditional fashion designer) as Niupela Pasin champion for the Better Together campaign; and, (4) meeting with George Telek (famous PNG musician) and his team for the content planning for the campaign song. Filming was also done at the NCC with the Incident Manager Dr Daoni Esorom and Deputy Incident Manager Dr Melinda Susapu for the COVID-19 facts for the same campaign.

Table 7. Monitoring of NPIs Implemented in Papua New Guinea

Social Measures	Monitoring Status					
	Date first implemented	Date last modified	Implementation		Partial lift	Lifted
			Geographical (national or sub-national)	Recommended or Required	Lifted for some area	Lifted for all areas
Hand Hygiene and Respiratory Etiquette	16 January*	3 October	National	Required		
Wearing Face Masks	29 July	3 October	Sub-national**	Required		
School Closure	23 March	17 August	Sub-national	Required		√
Workplace Closure	23 March	3 October	National***	Required		
Mass Gatherings	23 March	3 October	National	Required		
Stay at Home	23 March	3 October	Sub-national****	Required		√
Restrictions on Internal Movement (within country)	23 March	3 October	National	Required		√
Restrictions on International Travel	14 February	3 October	National	Required	√	

* First social media post done; ** In National Capital District; in public transportation (including Central Province) and aircraft; ***Only selected type of establishments; **** Curfew in NCD between 12 to 5 am

Logistics and Supplies

- WHO encourages partners to utilize the COVID-19 Supply Portal accessible at <https://covid-19-response.org/>. The Portal is a purpose-built tool that assigns orders to purchasing agencies that can execute and process them.
- Apart from the ongoing provincial logistics assessments in several provinces, there are ongoing discussions with the National Department of Health on the integration/transition of the COVID-19 supplies into routine supply chain, options for longer term storage and alignment with the Medical Supplies Reform Master Plan.

Funding and Expenditure

- Below is a summary of COVID-19 funding and expenditure as of 06 November. The tables below pertain only to funds that were held and transacted through the NDOH Health Services Improvement Program (HSIP) Trust Account, thus not comprehensive to cover all COVID-19 support made available through other modalities (e.g. funding through UN Agencies, etc.). Under the HSIP Trust Account, the total available funds from all sources is PGK 38 152 535.

Table 8. COVID-19 Funding and Expenditure Summary by Fund Source as of 06 November 2020

No.	Funding Source	Initial Amount	YTD Expend	O/S Commitments	Balance Available
1	GoPNG NDoH 2019 HIV/AIDS Reprogrammed Funds	3 299 651	3 174 512	125 139	-
2	GoPNG COVID-19 Funds 2020 from Treasury 2020	43 300 000	36 615 307	6 684 693	-
3	GoPNG COVID-19 Funds 2020 from Treasury (NOC)	2 000 000	1 999 793	-	207
4	GoPNG New COVID-19 Funds 2020 for PHAs	37 000 000	2 000 000	26 900 000	8 100 000
5	GoPNG New COVID-19 Funds for NDOH Clusters	28 000 000	2 515 177	-	25 484 823
6	GoPNG COVID-19 Funds 2020 from Treasury (NCC)	2 000 000	409 947		1 590 053
7	DFAT Emergency COVID-19 Funding	24 800 967	19 250 000	3 348 122	2 202 845
8	UNICEF Contribution to COVID-19	368 480	367 971	-	509
9	WHO COVID-19 Surveillance Funds (for 22 Provinces)	634 240	634 240	-	-
10	Private Sponsors	1 181 001	1 108 500	-	72 501
11	New Zealand Government	6 298 800	6 001 901	-	296 899
12	UNFPA Support to COVID-19 Emergency Response	549 580	144 883	-	404 697
13	Incentive Funds for Risk Communication Support in WNB	156 171	156 171	-	-
Total Funds in HSIP		149 588 889	74 378 401	37 057 954	38 152 535

ANNEX A – Quality Requirements for COVID-19 Medical Products

(Source: NDOH Circular No. 38/2020 Attachment)

Quality Requirements for COVID 19 Medical Products

Registered pharmaceutical importers, wholesalers and exporters are required to submit the following quality documentation in advance of importation. These technical documents must be current and in coloured copies of the original documents. The technical documents also be must be stamped and signed appropriately and must be legible and written in English.

Medicines:

1. Letter of authorisation from the manufacturer in the country of origin where the product will be sourced.
2. Certificate of Good Manufacturing Practice of the manufacturer.
3. Certificate of Pharmaceutical Product or evidence of registration by the mutual drug regulatory authority from the country of origin.
4. Certificate of Analysis of the Batch of the Product to be imported
5. Specimens of Product Labels or a clear coloured photograph of the Product to be imported.
6. The total quantity of the Product to be imported.

Medical Devices:

1. Letter of authorisation from the manufacturer of the medical device in the country of origin.
2. Quality Management System Certification: ISO: 13485: 2016 from the manufacturer of the Medical Device in the country of origin and Product Schedule.
3. Specimens of Product Labels or Product Brochure/Catalogue including Medical Device Specifications.
4. The total quantity of the medical device to be imported.

ANNEX B – Photos

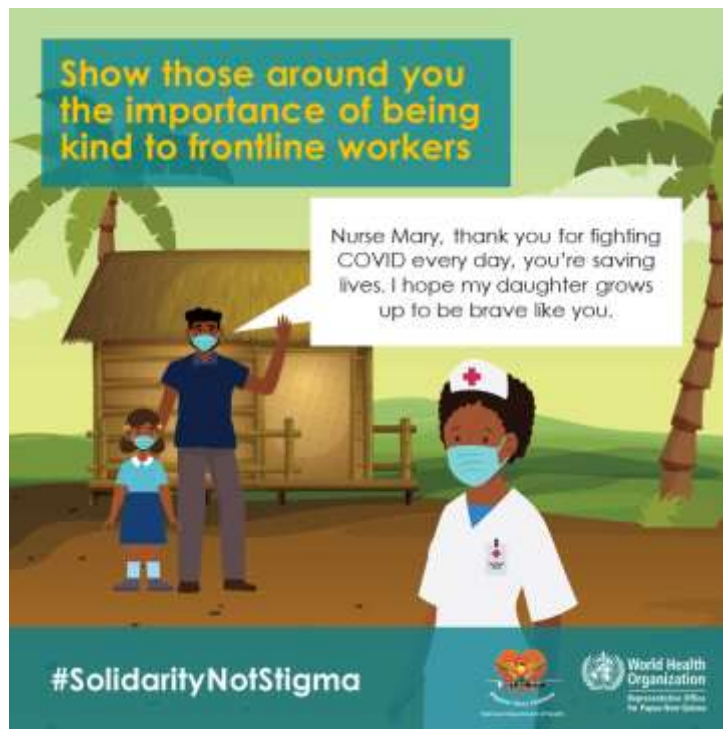


Photos 1-6. Staff training in Boana, Situm, Boac and Torowa Health Centres in Morobe Province



Photos 7-11. Two joint teams composed of NDOH, CPHL and WHO experts conducted an inter-cluster mission to East New Britain and New Ireland Provinces on 2-6 November 2020. They met their counterparts for surveillance, clinical management, hospital preparedness, laboratory, infection prevention and control and risk communication, community engagement and Niupela Pasin (new normal).

ANNEX C – Risk Communication Products



For more information about this Situation Report, contact:

Dr Daoni Esorom

A/Executive Manager, Public Health, National Department of Health
Email: daoniesorom@gmail.com; Mobile: +675-72313983

Mr Eric Salenga

Information and Planning Team, World Health Organization
Email: salengar@who.int