



This Situation Report is jointly issued by PNG National Department of Health and World Health Organization once weekly. This Report is not comprehensive and covers information received as of reporting date.

Situation Summary and Highlights

- ❑ As of 6 December (12:00 pm), there have been 681 COVID-19 cases and seven COVID-19 deaths reported in Papua New Guinea. From the period of 30 November to 6 December, there have been 26 new cases: 17 from West New Britain, 4 from National Capital District, 4 from Western Highlands, and 1 from East New Britain. The total number of provinces that have reported COVID-19 cases to date is sixteen.
- ❑ A multidisciplinary team from the NCC (surveillance, clinical management, risk communication and community engagement clusters) travelled to West New Britain Province to provide technical support for COVID-19 preparedness and response.
- ❑ Logistics assessment has been completed in 16 out of 22 provinces. The assessments for the remaining provinces will be completed by mid-December.

Table 1. COVID-19 IN PAPUA NEW GUINEA¹

	New Cases (30 November – 5 December 2020)	Cumulative Total
National Capital District	4	358
Western	0	204
West New Britain	17	68
Eastern Highlands	0	13
Central	0	9
Morobe	0	6
Western Highlands	4	5
East New Britain	1	3
East Sepik	0	3
Enga	0	3
Milne Bay	0	2
New Ireland	0	2
West Sepik	0	2
AROB	0	1
Hela	0	1
Southern Highlands	0	1
TOTAL	26	681

¹ As of 05/12/2020, 12:00 pm, PNG time

Upcoming Events and Priorities

- ❑ **Coordination:** Two inter-cluster provincial visits by NCC teams (comprised of representatives from surveillance, laboratory, clinical management, risk communication and community engagement) are scheduled to Milne Bay and Southern Highlands from the week of 7 December. The COVID-19 Summit has been rescheduled to take place from 25 January to 5 February 2021 at the APEC Haus in Port Moresby.
- ❑ **Surveillance:** Further analysis is underway to gain a deeper understanding of surveillance issues in the country, including providing remote support to provinces to enhance their surveillance activities. The healthcare worker (HCW) survey continues, with almost 300 responses received so far.
- ❑ **Laboratory:** Training is planned for PNGIMR for a tool that will facilitate logging of samples by provinces and provision of results by laboratories. Technical support continues for the implementation of this tool, refurbishment of CPHL being planned, testing and shipment of samples to Singapore through CPHL with support from DFAT and WHO. A meeting will be scheduled with MeSAC/MRAC to present the Ag-RDT proposal for emergency use in West New Britain. CPHL will start distributing COVID-19 EQA Proficiency Test panels.

Table 2. COVID-19 GLOBAL AND REGIONAL UPDATE²

	Confirmed Cases	Deaths
Global	65 257 767	1 513 179
Western Pacific	908 663	17 664

² WHO COVID-19 Dashboard as of 05/12/2020, 3:02 pm CEST

- ❑ **Case Management and Infection Prevention and Control:** Work is continuing on the update of the clinical management and IPC guidelines, as well as temperature monitoring standard operating procedures for non-health facilities. A national surge plan is being prepared, should there be any need for a large-scale health response in PNG. COVID-19 clinical activities will be integrated into routine care. Support will be provided to incorporate COVID-19 screening with screening for other diseases such as malaria and TB.
- ❑ **Risk Communication & Non-Pharmaceutical Interventions (NPIs):** Analysis and report writing of the results from the Rapid Convenience Survey is underway. Media placements for the re-branded Healthier Together campaign materials will be coordinated, and filming of the content for the re-branded Healthier Together campaign is ongoing. Deployment to the provinces from NCC continues to provide surge support. RCCE training of influential leaders is planned in Central, Eastern Highlands, Jiwaka, Hela, Simbu, and Western Highlands.
- ❑ **Logistics and Supplies:** Follow-up will be made to ensure the timely customs clearance of COVID-19 Antigen Rapid Diagnostic Kits and for securing their cold chain storage in the country. Support will be provided for CPHL for improving lab supply management. Final preparation of hand sanitisers is underway, including dangerous goods declaration and packing and consignment to Air Niugini for provinces. The current warehouse also needs to be cleaned, and the team will reorganise supplies storage space, pilling, and inventory.

National Transmission Assessment

3 – Large-scale community transmission

Due to low testing, there have been only a few reported cases in the past 7 days. Between 30 November and 6 December, 26 newly confirmed cases have been reported nationally from four provinces (17 cases from West New Britain, 4 from National Capital District, 4 from Western Highlands, and 1 from East New Britain). Sixteen out of 22 provinces have reported one or more cases since March 2020. Nationally, PNG remains in Stage 3 – large scale community transmission. In the past week, there has been two growing clusters of cases in West New Britain Province, with healthcare workers and community members impacted. With ongoing population movement, increasing mass gatherings, and low compliance to non-pharmaceutical interventions, increasing cases are expected. Movement out of provinces with higher caseloads (NCD, WNB) to other provinces has led to sporadic cases and local clusters reported by other provinces. Testing in all provinces remains critically low, and there are delays in receiving test results and undertaking contact tracing, therefore ongoing transmission in other parts of the country is a possibility as population mobility continues. Importation from bordering Papua Province in Indonesia and incoming travellers from other countries reporting COVID-19 cases also remains a threat. Testing needs to increase substantially to understand the extent of transmission.

Epi Update COVID-19

Tests	Cases	Deaths	ICU Admissions
1839	26	0	0
NAT Tests past 7 days	New cases past 7days	Deaths past 7days	ICU Admissions past 7 days
35126	681	7	9
Cumulative NAT Tests	Cumulative Cases	Cumulative Deaths	Cumulative ICU Admissions

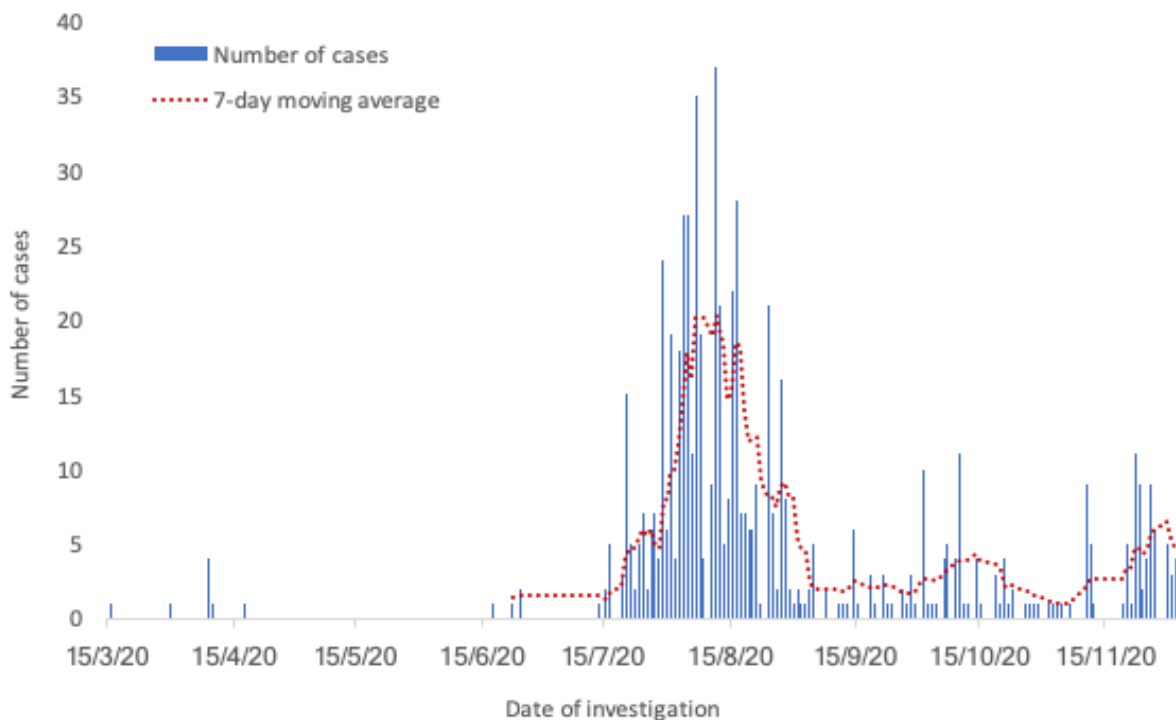
	0	14	4	*	
	Imported Cases in past 28 days	Cases in past 7 days with no link	Active Clusters in the past 7 days	Active clusters with >3 generations	
Health Service Provision COVID-19	5116	12	3	93	339
	Health care workers trained in COVID19 Case Management	Healthcare worker cases reported past week	Hospitals admitting COVID-19 patients	ICU beds for COVID-19 patients	Non-ICU Hospital beds for COVID19 patients

* Case investigations are ongoing

Epidemiology

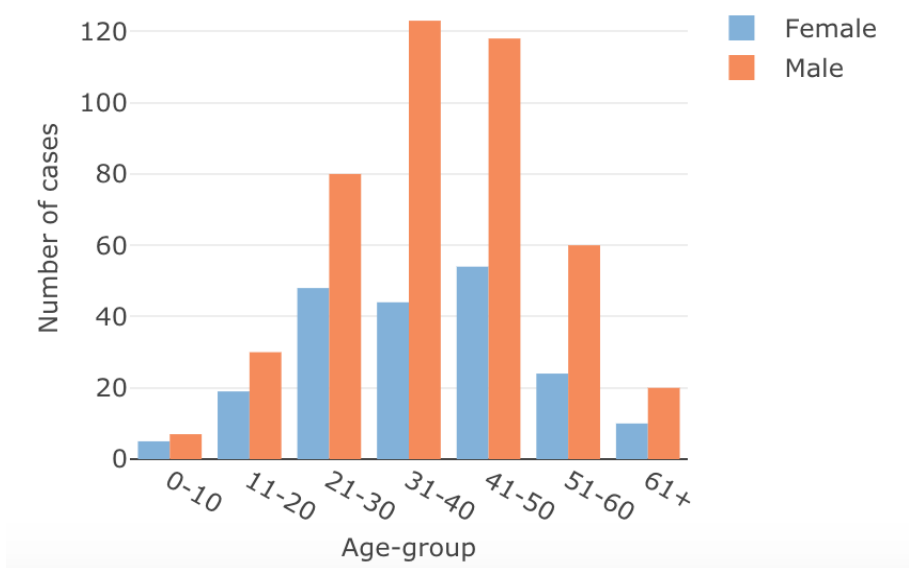
- As of 6 December (12:00 pm), there have been 681 COVID-19 cases, and seven COVID-19 deaths reported in Papua New Guinea. From the period of 30 November to 6 December, there have been 26 new cases: 17 from West New Britain, 4 from National Capital District, 4 from Western Highlands, and 1 from East New Britain. Additional contact tracing and testing are ongoing for unlinked cases.
- There are now confirmed COVID-19 cases reported from 16 out of 22 provinces (72.3%): Autonomous Region of Bougainville (1), Central (9), Eastern Highlands (13), East New Britain (3), East Sepik (3), Enga (3), Hela (1), Milne Bay (2), Morobe (6), NCD (358), New Ireland (2), Sandaun (1), Southern Highlands (1), West New Britain (68), West Sepik (2), Western (204), and Western Highlands (5).

Figure 1. Epidemiological Curve of COVID-19 Cases in Papua New Guinea, 15 March to 6 December 2020



- The majority of the confirmed cases are male. Ages range from 1 to 87, with the majority of cases aged between 20 and 60 years.
- The disparity between males and females could be due to employment status, movement and male-dominated industries affected, health-seeking behaviour and access to testing.

Figure 2. COVID-19 Cases by Age-Group and Sex in Papua New Guinea, 15 March to 6 December 2020



- Just over half (56%) of confirmed cases reported being asymptomatic during the presentations for swabbing (Figure 3). Contributing factors to the high proportion of asymptomatic cases could include health-seeking behaviours in Papua New Guinea, lack of reporting of past symptoms, lack of probing question about symptoms during swab collection, and testing early during the pre-symptomatic stage. Of the symptomatic cases, the most common symptoms were cough or fever (Figure 4).

Figure 3. The proportion of Symptomatic and Asymptomatic COVID-19 Cases in Papua New Guinea at Time of Swabbing, March to 6 December 2020

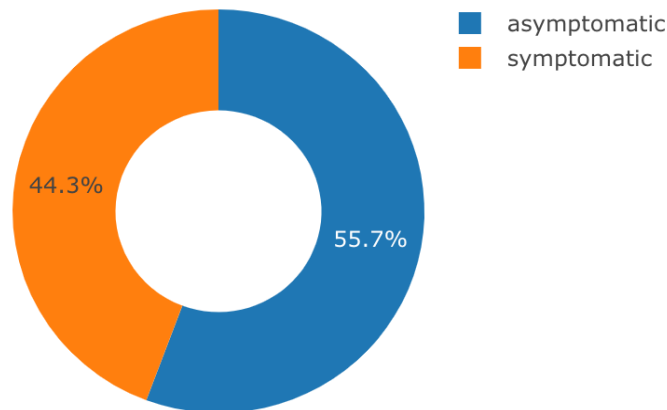
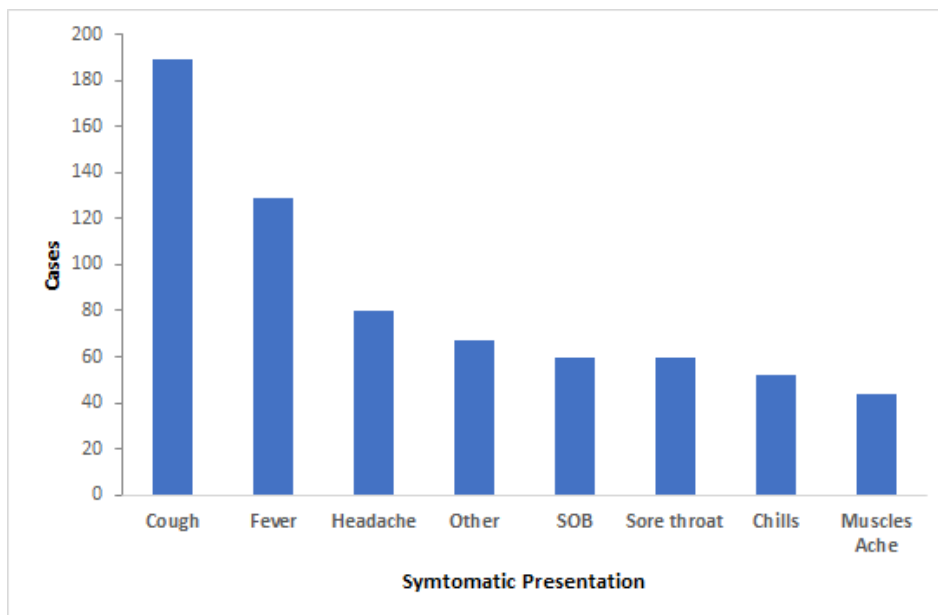


Figure 4. Symptoms on Presentation of COVID -19 Symptomatic Cases in Papua New Guinea, 15 March to 6 December 2020



- As sample collection and testing are low, there is a need to increase testing across all provinces. Work is being undertaken with the provinces, including the introduction of the antigen rapid diagnostic test, training of extra swabbers and a survey of barriers to and enablers of swabbing amongst healthcare workers, to address this aim.

- For the period of 30 November to 6 December, the COVID-19 National Hotline received 2,085 calls. Of these, 35 (1.7%) were health-related calls. Twenty (20) of these were referred to Rapid Response Team/PHA. As of 6 December, the Hotline received a total of 140,9994 calls. Of these, 4,747 (3.4%) were health-related calls. A total of 1,544 calls were referred to Rapid Response Team/PHA.
- Papua Province in Indonesia is continuously reporting COVID-19 cases in areas that border Sandaun and Western Provinces. While the border is officially closed, traditional border crossing continues, and the threat of case importation remains high. As of 6 December, Papua Province has reported a total of 5,418 confirmed cases and 89 deaths among people who confirmed to have COVID-19 with RT-PCR (data accessible at <https://dinkes.papuabaratprov.go.id/>).

Table 3. Persons Screened by Point of Entry

Total Number of Travelers Screened before SOE (until 22 March)	29,387	
Total Number of Travelers Screened during SOE (23 March – 16 June)	3,788	
Total Number of Travelers Screened after SOE (17 June – 15 November)	Air	10,114
	Sea*	671
	Land	6
* 3 passengers and the rest are crew	Total	10,791

Strategic Approach

National and Provincial Public Health Response

- The Pandemic Response Coordination Group and the Health Operations Team continue to meet regularly at the National Control Centre.
- In response to a new COVID-19 case reported on 28 October in West Sepik, West Sepik PHA issued a circular No.12/2020 for those who are in Sandaun Provincial Hospital and residential compound to: (1) self-quarantine for those individuals in the residential home since 22 October until further notice; (2) not to allow visitors to the compound; (3) monitor ILI symptoms and report to the cough triage if symptoms developed; (4) scale down hospital services to attend emergency services only and essential services; (5) control visitors and guardians to the hospital and comply with wearing face masks and hygiene practices; (6) comply with Niupela Pasin for all staff; and (7) ensure the families of staff cooperate with the surveillance team for contact tracing.

COVID-19 Prevention and Control

- The healthcare worker survey continues, with almost 300 interviews completed to date.
- The eHDF is being promoted to ensure all incoming passengers can complete the eHDF before entry to the country. The form is available at <https://www.pnghdf.info/>. An ongoing discussion is underway to integrate eHDF and quarantine monitoring with tracking devices and mobile applications.

- Technical support was provided to West New Britain PHA through the inter-cluster provincial visit by NCC team comprised of representatives from surveillance, clinical management, risk communication and community engagement clusters.
- A list of health facilities conducting swabbing for COVID-19 has been compiled (Annex B).
- A concept note for emergency use of Panbio COVID-19 Ag rapid test in Western New Britain has been prepared.
- NDoH has been working closely with DFAT to ensure adequate support available for overseas COVID-19 testing, should the need be required, with support from WHO.
- NCC received a full report for private laboratory assessment.
- Using the updated training modules prepared with technical support from WHO, the district-level training is continued under the NDOH PNG COVID-19 Emergency Response Project financed by World Bank and with the technical backing by UNICEF and WHO. Training is yet to be completed in Eastern Highlands, Hela, Milne Bay, Morobe, Western, East Sepik, West Sepik, East New Britain, West New Britain, New Ireland and AROB. The training has been put on hold in November 2020 because of the nationwide polio campaign and is expected to resume in early December 2020.

Table 4. Number of Healthcare Workers and Programme Managers Trained under NDOH PNG COVID-19 Emergency Response Project Financed by World Bank and with technical support by UNICEF and WHO as of 29 November 2020

	Province	Number of Batches Completed	Number of Individuals Trained		Province	Number of Batches Completed	Number of Individuals Trained
1	Western Highland	3	72	8	Eastern Highland	1	32
2	Jiwaka	3	65	9	Southern Highland	3	43
3	Simbu	3	64	10	Gulf	2	21
4	Central	3	54	11	Milne Bay	2	38
5	Hela	1	18	12	Oro	2	44
6	Morobe	8	124	13	Western	2	80
7	Madang	2	85				
TOTAL NUMBER OF BATCHES			35	TOTAL NUMBER OF TRAINED INDIVIDUALS			740

Table 5. Number* of Health Care Workers Trained by Province

	Province	Total		Province	Total
	MOMASE REGION			NEW GUINEA ISLANDS REGION	
1	Madang	431	12	ARoB	37
2	Morobe	549	13	East New Britain	236
3	East Sepik	92	14	Manus	89
4	West Sepik	200	15	New Ireland	320
	HIGHLANDS REGION		16	West New Britain	328
5	Eastern Highlands	146		SOUTHERN REGION	
6	Enga	112	17	Central	330
7	Hela	99	18	Gulf	51
8	Jiwaka	138	19	Milne Bay	132
9	Simbu	64	20	NCD	269
10	Southern Highlands	410	21	Oro	78
11	Western Highlands	851	22	Western	154

*Trained under WHO training and NDOH PNG COVID-19 Emergency Response Project

Table 6. Number of Facilities and Beds for COVID-19 as of 29 November 2020

Health Facilities	Number of Provinces	Number of Facilities OR Beds	Provinces that Reported
Pre-triage facilities	20	>120	ARoB, Central, EH, ENB, ES, Enga, Gulf, Hela, Jiwaka, Madang, Morobe, MB, NCD, NI, Oro, SH, Simbu, WS, Western, WH, WNB
Quarantine facilities	13	223	ARoB, EH, ENB, Enga, Hela, Jiwaka, Madang, Manus, Morobe, NCD, SH, Simbu, WH
Isolation facilities	17	271	ARoB, EH, ENB, Enga, Hela, Jiwaka, Madang, Manus, Morobe, MB, NCD, SH, Simbu, WS, Western, WH, WNB
Intensive Care Unit	16	93	AROB, EH, ENB, Enga, Gulf, Hela, Madang, Manus, Morobe, MB, NCD, SH, Simbu, WS, Western, WNB

Autonomous Region of Bougainville (ARoB), East Sepik (ES), East New Britain (ENB), Eastern Highlands (EH), Milne Bay (MB), National Capital District (NCD), New Ireland (NI), Southern Highlands (SH), West New Britain (WNB), Western Highlands (WH), West Sepik (WS)

Communication, Community Engagement and Non-Pharmaceutical Interventions (Social Measures) – NIUPELA PASIN

- Technical support was provided on areas related to risk communications to the inter-cluster mission to Western, ARoB, West New Britain and NCD/ Central Provinces.
- Printing has been ongoing for the package of information materials for health workers, 'Protecting yourself at work from COVID-19: Resource materials for healthcare workers'.
- Three of the four videos of Niupela Pasin champions have been produced and reviewed as part of the Healthier Together Festival.
- The following activities are conducted under the NDOH's COVID-19 Emergency Response Project financed by World Bank and with technical support from UNICEF between 1 August and 2 December 2020: (1) 1,443 television commercial spots in EMTV, TVWan and TVWan Plus, including the bonus TVC spots given by the host television channels after 22 November 2020; (2) 1,968 radio spots in FM100, Hot FM, Yumi FM and Wantok Radio Light; and, (3) 82 COVID-19 advertisements that have been featured on daily newspapers (Post Courier and the National Newspaper) and in only Tok Pisin weekly newspaper (Wantok Niuspepa).
- Between 3 September 26 November 2020, ADRA, Touching The Untouchable (TTU) and World Vision supported by UNICEF, trained 375 influential leaders in six provinces (Central, Eastern Highlands, Jiwaka, Simbu, Southern Highlands and Western Highlands) in Highlands and Southern regions (Table 7).

Table 7. The number of influential leaders trained by ADRA, TTU and World Vision between 3 September and 26 November 2020.

Region	Province	District	Health Facility or training venue	Training Date	Influential Leaders Trained		
					Male	Female	Total
Highlands Region	Eastern Highlands	Henganofi	Henganofi Health Center	03-04 Sep 2020	7	16	23
			Fore & Nupuru Health Center	07-08 Sep 2020	9	24	33
			Kesevaka Helth Center	10-11 Sep 2020	3	20	23
			Komperi Health Center	14-15 Oct 2020	5	11	16
	Simbu	Sinesine Yongumugl	Mai Health Center	29 Sep 2020	20	3	23
			Koge Health Center	30 Sep 2020	20	2	22
		Chuave	Yandima Health Center	1 Oct 2020	20	2	22
			Wara Mai Gateway Foursquare Church	23 Oct 2020	11	2	13
		Gumini	Karilmaril Health Center	2 Oct 2020	22	5	27

		Kundiawa Gembogl	Kundiawa Urban Health Center	23 Oct 2020	18	7	25
	Jiwaka	Amglimp South Waghi	Tombil Health Center	27 Nov 2020	16	1	17
	Western Highlands	Dei	Kotna Health Facility	29 Oct 2020	13	5	18
		Hagen Central	Wagbel Health Center	19 Nov 2020	8	22	30
		Hagen Central	Rebiamul Health Center	26 Nov 2020	20	3	23
	SHP	Mendi Munihi	Topa Health Sub Centre	26 Nov2020	20	14	34
Southern Region	Central	Hiri	Porebada	23 Oct 2020	14	9	23

Table 8. Monitoring of NPIs Implemented in Papua New Guinea

Social Measures	Monitoring Status					
	Date first implemented	Date last modified	Implementation		Partial lift Lifted for some area	Lifted Lifted for all areas
			Geographical (national or sub-national)	Recommended or Required		
Hand Hygiene and Respiratory Etiquette	16 January*	3 October	National	Required		
Wearing Face Masks	29 July	3 October	Sub-national**	Required		
School Closure	23 March	17 August	Sub-national	Required		√
Workplace Closure	23 March	3 October	National***	Required		
Mass Gatherings	23 March	3 October	National	Required		
Stay at Home	23 March	3 October	Sub-national****	Required		√
Restrictions on Internal Movement (within the country)	23 March	3 November	National	Required		√
Restrictions on International Travel	14 February	13 November	National	Required	√	

* First social media post done; ** In National Capital District; in public transportation (including Central Province) and aircraft, ***Only selected type of establishments; **** Curfew in NCD between 12 to 5 am

Logistics and Supplies

- WHO encourages partners to utilise the COVID-19 Supply Portal accessible at <https://covid-19-response.org/>. The Portal is a purpose-built tool that assigns orders to purchase agencies that can execute and process them.
- Apart from the ongoing provincial logistics assessments in several provinces, there are continuing discussions with the National Department of Health on the integration/transition of the COVID-19 supplies into the routine supply chain, options for longer-term storage and alignment with the Medical Supplies Reform Master Plan.

- EQA panel tests and a total of 2120 GeneXpert cartridges arrived in the country with support from WHO.
- After undergoing quality checks at the NDoH Facilities Branch, the 20 oxygen concentrators procured through UNICEF support were shipped on 25 November 2020 to be distributed to first 13 provinces (Annex C). Another 100 oxygen concentrators procured by WHO shall be distributed in the coming weeks after quality checks are undertaken.

Funding and Expenditure

- Below is a summary of COVID-19 funding and expenditure as of 28 November. The tables below pertain only to funds that were held and transacted through the NDOH Health Services Improvement Program (HSIP) Trust Account, thus not comprehensive to cover all COVID-19 support made available through other modalities (e.g. funding through UN Agencies, etc.). Under the HSIP Trust Account, the total available funds from all sources are PGK 33,097,449.

Table 9. COVID-19 Funding and Expenditure Summary by Fund Source as of 13 November 2020

No.	Funding Source	Initial Amount (PGK)	YTD Expend (PGK)	O/S Commitments (PGK)	Balance Available (PGK)
1	GoPNG NDoH 2019 HIV/AIDS Reprogrammed Funds	3,299,651	3,188,071	113,009	-
2	GoPNG COVID-19 Funds 2020 from Treasury 2020	43,300,000	36,615,307	6,684,693	-
3	GoPNG COVID-19 Funds 2020 from Treasury (NOC)	2,000,000	1,999,793	-	207
4	GoPNG New COVID-19 Funds 2020 for PHAs	37,000,000	2,000,000	29,100,000	5,900,000
5	GoPNG New COVID-19 Funds for NDOH Clusters	28,000,000	2,923,957	-	25,317,000
6	GoPNG COVID-19 Funds 2020 from Treasury (NCC)	2,000,000	853,001	-	1,335,396
7	DFAT Emergency COVID-19 Funding	24,800,967	19,250,000	3,348,122	2,202,845
8	UNICEF Contribution to COVID-19	368,480	367,971	-	509
9	WHO COVID-19 Surveillance Funds (for 22 Provinces)	634,240	634,240	-	-
10	Private Sponsors	1,181,001	1,108,500	-	72,501
11	New Zealand Government	6,298,800	6,001,901	-	296,899
12	UNFPA Support to COVID-19 Emergency Response	549,580	148,133	-	401,447
13	Incentive Funds for Risk Communication Support in WNB	156,171	156,171	-	-
Total Funds in HSIP		149,588, 889	75,247,046	41,244,394	33,097,449

ANNEX A – Quality Requirements for COVID-19 Medical Products

(Source: NDOH Circular No. 38/2020 Attachment)

Quality Requirements for COVID-19 Medical Products

Registered pharmaceutical importers, wholesalers and exporters are required to submit the following quality documentation in advance of importation. These technical documents must be current and in coloured copies of the original documents. The technical documents also be must be stamped and signed appropriately and must be legible and written in English.

Medicines:

1. Letter of authorisation from the manufacturer in the country of origin where the product will be sourced.
2. Certificate of Good Manufacturing Practice of the manufacturer.
3. Certificate of Pharmaceutical Product or evidence of registration by the mutual drug regulatory authority from the country of origin.
4. Certificate of Analysis of the Batch of the Product to be imported
5. Specimens of Product Labels or a clear coloured photograph of the Product to be imported.
6. The total quantity of the Product to be imported.

Medical Devices:

1. Letter of authorisation from the manufacturer of the medical device in the country of origin.
2. Quality Management System Certification: ISO: 13485: 2016 from the manufacturer of the Medical Device in the country of origin and Product Schedule.
3. Specimens of Product Labels or Product Brochure/Catalogue, including Medical Device Specifications.
4. The total quantity of the medical device to be imported.

ANNEX B – List of Health Facilities Conducting Swabbing for COVID-19

This list is undergoing further verification.

New Guinea Islands Region

AROB		East New Britain Province	
North	Buka Hospital	Gazelle	Kerevat District Hospital
Central	Arawa District Hospital	Kokopo	St Mary's Hospital
South	Buin Health Centre	Pomio	Butuwin Urban Clinic
		Rabaul	Warangoi Health Centre
			Rabaul Urban Clinic
Manus Province		New Ireland Province	
Manus	Lorengau Provincial Hospital	Kavieng	Kavieng Provincial Hospital
		Namatanai	Lemakot Health Centre
			Kimadan Health Centre
			Namatanai Health Centre
			Simberi Health Sub Centre
			Konos Aid Post
Western New Britain			
Talasea	Kimbe Provincial Hospital		

Southern Region

Central Province		Gulf	
Abau	Moreguina Health Centre	Kerema	Kerema Provincial Hospital
Kairiku- Hiri	PAU		
NCD		Western	
Moresby North	Pacific International Hospital	North Fly	Kiunga Health Centre
East	Gordons Urban Health Centre	South Fly	Tabubil Hospital
Moresby North	Tokarara Urban Health Centre		Daru Provincial Hospital
West	Port Moresby General Hospital		
Moresby South	Badili Urban Health Centre		
	Kaugere Foursquare		
	Lawes Road		

Momase Region

East Sepik Province		Madang	
Ambunti-Drekikir	Ambunti Health Centre	Madang	Yagaum District Hospital
	Drekikir Health Centre		Madang PHA
	Saussia Health Centre		
Maprik	Maprik District Hospital	West Sepik	

Wewak	Wewak Town Clinic	Vanimo Green	Vanimo Provincial Hospital
Yangoru-	Yangorru Health Centre		Old Weather Station Triage
Saussia	Kubalia Health Centre		
Morobe			
Bulolo	Bulolo District Hospital	Lae	ANGAU Base Hospital
	Mumeng Health Centre		Malahang Health Centre
	Wau Health Centre		Buimo Urban Clinic
	Buang Health Sub Centre		Milfordhaven Urban Clinic
Finschafen	Braun District Hospital	Huon Gulf	Flores International Hospital
Kabwum	Kabwum Health Centre		Morobe Health Centre
Markham	Mutsing Health Centre	Menyamy	Salamua Health Centre
	Wampar Health Centre	Nawae	Menyamy Health Centre
Tewai- Siassi	Wasu Aid Post		Boana Health Centre
			Bumayong Health Sub Centre

Highlands Region

Eastern Highlands Province		Enga Province	
Daulo	Asaro Health Centre	Kompam- Ambum	Kompam District Hospital
Goroka	Eastern Highlands Provincial Hospital	Lagaip-Porgera	Laiagam District Hospital
Kainantu	Kainantu District Hospital	Wabag	Wabag Provincial Hospital
Okapa	Okapa District Hospital	Wapenamanda	Sopas Urban Health Centre
			Mambisanda Health Centre
Jiwaka Province		Simbu Province	
Angalimp – South Wahgi	Kudjip Nazarene District Hospital	Chuave	Chuave Health Centre
	Kindeng Health Centre	Karimui- Nomane	Kilau Health Centre
North Wahgi	Nondugl Health Centre	Kundiawa- Gemboji	Kundiawa Provincial Hospital
	Fatima Urban Health Centre	Sinasina- Yonggamugl	Koge Health Centre
Southern Highlands Province		Western Highlands Province	
Ialibu-Pangia	Ialibu District Hospital	Mt Hagen	Mt Hagen Provincial Hospital
Mendi-Munihu	Mendi Provincial Hospital	Mul- Baiyer	Bukapena Health Centre
Nipa-Kutubu	Nipa Health Centre	Tambul- Nebilyer	Togoba Health Centre

ANNEX C – Photos



Photo 1. Health Operations meetings are held on Mondays, Wednesdays and Fridays.



Photo 2. A RCCE team of NCD held a team briefing before their activities started.



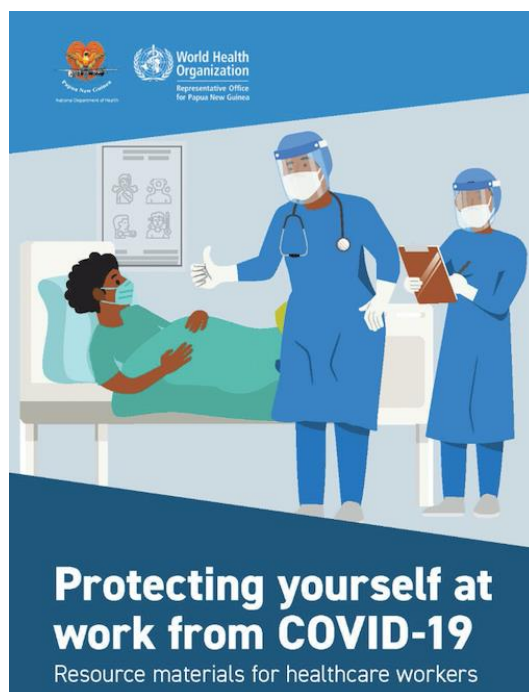
Photo 3. A team from NCC visited Biala Health Centre to provide technical support.



Photos 4-5. WHO conducted drills at Biala Health Centre with NDoH staff.

ANNEX D – Risk Communication Products

Protecting yourself at work from COVID-19: Resource materials for healthcare workers is now available online in this link: <https://www.who.int/papuanewguinea/internal-publications-detail/protecting-yourself-at-work-from-covid-19>



For more information about this Situation Report, contact:

Dr Daoni Esorom

A/Executive Manager, Public Health,
National Department of Health

Email: daoniesorom@gmail.com; Mobile: +675-72313983

Dr Stefanie Vaccher

Surveillance and Epidemiology Team,
World Health Organization

Email: vacchers@who.int